



# FEED THE FUTURE

The U.S. Government's Global Hunger & Food Security Initiative

LINKING AGRICULTURE & NUTRITION  
PATHWAYS | PRINCIPLES | PRACTICE

BRIEF  
**4**

IMPROVING NUTRITION THROUGH AGRICULTURE TECHNICAL BRIEF SERIES

## Understanding the Women's Empowerment Pathway

MARCH 2014



**USAID**  
FROM THE AMERICAN PEOPLE

**SPRING**  
Strengthening Partnerships, Results,  
and Innovations in Nutrition Globally

## **DISCLAIMER**

This report is made possible by the generous support of the American people through the United States Agency for International Development (USAID) and Feed the Future, the U.S. Government's global hunger and food security initiative, under the terms of the Cooperative Agreement AID-OAA-A-11-00031 (SPRING), managed by the JSI Research & Training Institute, Inc. (JSI). The contents are the responsibility of JSI, and do not necessarily reflect the views of USAID or the U.S. Government.

## **ABOUT SPRING**

The Strengthening Partnerships, Results, and Innovations in Nutrition Globally (SPRING) project is a five-year USAID-funded Cooperative Agreement to strengthen global and country efforts to scale up high-impact nutrition practices and policies and improve maternal and child nutrition outcomes. The project is managed by the JSI Research & Training Institute, Inc., with partners Helen Keller International, The Manoff Group, Save the Children, and the International Food Policy Research Institute. SPRING provides state-of-the-art technical support and focuses on the prevention of stunting and maternal and child anemia.

## **RECOMMENDED CITATION**

SPRING. 2014. *Understanding the Women's Empowerment Pathway, Brief #4*. Improving Nutrition through Agriculture Technical Brief Series. Arlington, VA: USAID/Strengthening Partnerships, Results, and Innovations in Nutrition Globally (SPRING) Project.

## **SPRING**

JSI Research & Training Institute, Inc.

1616 Fort Myer Drive, 16th Floor

Arlington, VA 22209 USA

Phone: 703-528-7474

Fax: 703-528-7480

Email: [info@spring-nutrition.org](mailto:info@spring-nutrition.org)

Internet: [www.spring-nutrition.org](http://www.spring-nutrition.org)

This series of briefs illustrates how a set of pathways and principles may assist Feed the Future stakeholders to strengthen agriculture and nutrition linkages across and within country portfolios. Short vignettes from agriculture activities highlight how the pathways and principles can be applied in diverse contexts. The conceptual frameworks of the pathways and principles for improving nutrition through agriculture are described in the first brief. Each subsequent brief explores a different route between agriculture and nutrition: food production, income generation, and women's empowerment.

## INTRODUCTION

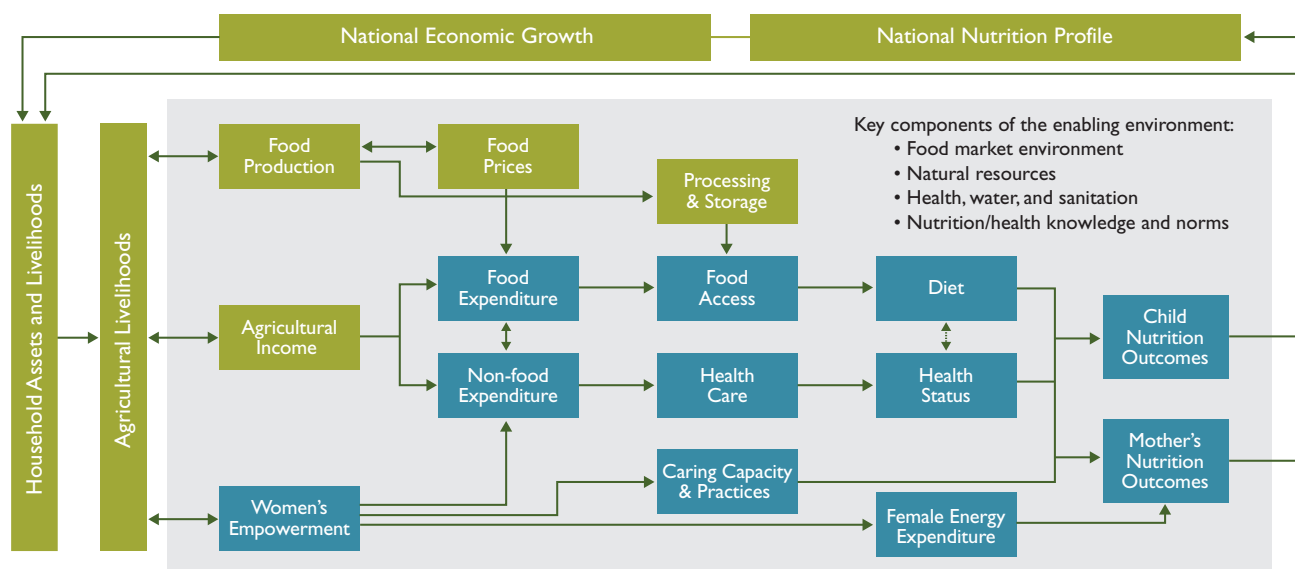
Feed the Future is a U.S. Government initiative that explicitly aims to improve nutrition through agriculture-led activities that also strive to reduce rural poverty in 19 focus countries. The initiative strives both to improve nutrition where it works and to contribute to the evidence base demonstrating how agriculture affects diet and nutrition for rural families. There is growing international agreement on key pathways<sup>1</sup> and principles<sup>2</sup> for improving nutrition through agriculture, as summarized in *Understanding and Applying Primary Pathways and Principles. Technical Brief #1*. However, there is still a lack of well-documented examples of programming at scale that are required to improve our understanding of how agriculture can best contribute to improved nutrition.

This brief focuses on the importance of the women's empowerment pathway to improve nutritional outcomes through agricultural livelihoods, illustrated in blue in the figure below. However, all of the pathways are interrelated. Agricultural activities typically affect more than one pathway and interact with the enabling environment that includes policies, the natural resource base, and cultural practices, among other factors.

## WOMEN'S EMPOWERMENT

The pathway from women's empowerment to improved nutrition is influenced by a number of factors, including social norms, knowledge, skills, and how decision-making power is shared within households. The pathway consists of three interrelated components: women's use of income for

### STEPS TOWARD IMPROVED NUTRITION: THE WOMEN'S EMPOWERMENT PATHWAY



Women's Empowerment Pathway is highlighted in blue  
Source: Herforth and Harris, 2014.

<sup>1</sup>The conceptual pathways between agriculture and nutrition help us understand and measure how various agricultural investments or activities could improve access to food and health care; how they affect and are affected by the enabling environment; and how they ultimately affect the nutrition of women and children.

<sup>2</sup>The principles are the current global consensus of key recommendations for improving nutrition through agriculture. The principles are available from the Ag2Nut Community of Practice at [http://unscn.org/files/Agriculture-Nutrition-CoP/Agriculture-Nutrition\\_Key\\_recommendations.pdf](http://unscn.org/files/Agriculture-Nutrition-CoP/Agriculture-Nutrition_Key_recommendations.pdf).

food and non-food expenditures, the ability of women to care for themselves and their families, and women's energy expenditure (See Figure).

Empirical evidence suggests that empowering women improves nutrition for mothers, their children, and other household members. For example, more than half of reductions in all child stunting from 1970 to 1995 can be attributed to increases in women's status (Smith and Haddad 2000). Some studies have found that women's discretionary income has greater impact on child nutrition and food security than men's (United Nations Children's Fund 2011; Smith et al. 2003), and among agriculture interventions that have improved nutrition, women's active involvement has been a consistent element (Ruel and Alderman 2013). Agriculture can also pose threats to family nutrition, especially when women must work at times and in places that interfere with the feeding of their infants and young children (United Nations Children's Fund 2011). Demands for excessive physical activity during a pregnancy may also put their unborn babies at risk (Herforth, Jones, and Pinstруп-Andersen 2012).

Through its learning agenda, Feed the Future is committed to learning by doing and strengthening the evidence base.<sup>3</sup> Several questions already posed by Feed the Future underscore what the initiative is trying to understand regarding the linkages between women's empowerment, sustained improvements in food security, and nutrition, including:

#### FROM THE FEED THE FUTURE LEARNING AGENDA WOMEN'S EMPOWERMENT IN FOCUS

- » Have agriculture and nutrition activities effectively improved women's empowerment, including, but not limited to, community leadership, agricultural production, access to credit and inputs, control over income, and women's use of their own time?
- » Has access to paid employment or the types of employment available to men and women been affected by interventions advancing commercialization in agriculture value chains?
- » Have poverty, undernutrition, and hunger been reduced by activities that emphasize gender equality and the empowerment of women?



© Arne Hoel/World Bank

The following vignettes draw upon existing Feed the Future activities to help illustrate how agriculture and nutrition activities are working within specific contexts to empower women. While these short stories are not perfect narratives about how empowering women contributes to improved nutrition, they serve as real life examples to help show how the women's empowerment pathway may be used to analyze opportunities and gaps that exist toward improving both agriculture livelihood and nutrition outcomes. The analysis following each vignette is not comprehensive, but instead provides information relevant to one or more of the learning agenda<sup>1</sup> questions and reiterates the interrelated nature of the pathways between agriculture and nutrition.

<sup>1</sup> USAID's Bureau for Food Security has established a learning agenda for Feed the Future that includes a set of strategic questions intended to produce evidence, findings, and answers primarily through impact evaluations, performance evaluations, and policy analysis. Through the learning agenda, Feed the Future will contribute to the body of knowledge on food security to improve the design and management of interventions in the agriculture and nutrition sectors. See <http://agrilinks.org/sites/default/files/resource/files/Feed%20the%20Future%20Learning%20Agenda.pdf>.

## WOMEN'S EMPOWERMENT PATHWAY IN FOCUS: TAJIKISTAN

Members of a women's savings group in Pakhtakor Village, Tajikistan, met to learn how to preserve vegetables from their gardens. They explained that these trainings, along with other savings-related activities, have allowed them to provide nutritious foods to their families for more months of the year. Membership has also provided them with knowledge of appropriate infant feeding practices and the ability to control income that they can use to benefit their families and community.

### USAID Family Farming Project

**Location:** Khatlon Region, Tajikistan

**Implementers:** DAI, Winrock International, and Save the Children International

**Timeframe:** 2010–2014

**Key Interventions:** Training on crop production; savings groups; infant and young child feeding; food preservation training

The USAID Family Farming Project created more than 115 savings groups that comprise both mothers of young children and mothers-in-law to finance short-term household needs and to give women a source of capital for small-scale income-generating activities. Control over income and savings, in combination with strengthened social networks, has led to leadership opportunities and increased status in their communities. Additionally, these groups are a platform to layer training in other topics, such as food preservation, nutrition education, soil management, and growing practices appropriate for nutrient-dense homestead garden crops. The group in Pakhtakor Village, for example, has attempted joint activities, such as sharing in the cost of hybrid wheat seed to increase their yields for both sale and consumption and establishing an emergency health care fund for women and children in their community. One challenge noted by members of the group is that Pakhtakor Village is located in one of the most arid parts of Tajikistan. Although investments to renovate irrigation systems are being made, little has been done to bring potable water into communities for household use. As a result, most of the savings group members use some of their savings to purchase clean drinking water, which is delivered in trucks to the community, leaving less money available for nutritious foods, health care needs, and other household expenditures.

### Opportunities for Nutrition Linkages

A key strategy in the design of the USAID Family Farming Project was to facilitate increases in women's socioeconomic power to serve as a stepping stone toward better agriculture and nutrition outcomes. The activity appears to have been successful in increasing women's control of income, improving access to health care, and increasing women's control of their time. To move further along the pathway toward sustainable nutrition outcomes, the following additional opportunities could be considered:



**Nutrition Knowledge:** Although a strong emphasis on training has led to increased nutrition knowledge, the need to purchase safe water limits women's purchasing power, inhibiting their ability to fully utilize knowledge of nutrition practices. There is a need to develop or improve potable water systems that will help free up women's savings for investment in nutrient-dense foods and inputs to food production.

**Food Access:** Women are gaining access to and increasing control of income. However, it is also important to ensure adequate availability and affordability of more nutrient-dense food in local markets and link purchasing power and decision-making to social and behavior change messages.

**Women's Time, Labor, and Control of Income:** The range of activities targeting women's savings groups requires increased energy and time expenditure of members. Women indicated that they did not mind investing additional time in activities that were valuable to their family's wellbeing and/or that provided opportunities for earning additional income.

## WOMEN'S EMPOWERMENT PATHWAY IN FOCUS: UGANDA

In northern and southwestern Uganda, women farmers are producing cabbages, groundnuts, onions, chickens, and eggs as part of Community Connector. From the income they earn, they are saving for—and investing in—their future.

### Community Connector

**Location:** Northern and southwestern Uganda

**Implementers:** FHI360 and six partners

**Timeframe:** 2012–2016

**Key Interventions:** Savings groups; crop production; and training on maternal, infant, and young child feeding and WASH



The activity is empowering women by increasing income generated from the sale of cash crops and enhancing their access to markets. As an integrated activity, Community Connector has linked interventions designed to boost income with technical assistance on nutrition to existing savings and community groups. Staff help group members plan for future household and agriculture spending. Most cash crops are sold rather than consumed at home, and much of the income earned from sales goes into savings. Although women occasionally use their money for emergencies, their primary goal is to accumulate adequate savings to support short- and long-term objectives, such as the purchase of agricultural inputs and other productive assets.

During the activity's first year, staff recognized that training for financial management and crop production was separate from training on maternal, infant, and young child nutrition and water, sanitation, and hygiene (WASH). One set of frontline workers was assisting mothers in better understanding how to manage their finances, while another set of workers, with a different set of skills and mandates, was

responsible for helping families improve infant and young child feeding, WASH, and health care practices. As a result, Community Connector now ensures that packages of interventions are delivered through one cohesive set of messages.

### Opportunities for Nutrition Linkages

Community Connector has an intentional focus on improving nutritional outcomes for its target population by increasing women's incomes and asset base. It helps women prioritize the spending of their increased income on improved diets, inputs for WASH, and health care. To succeed, Community Connector takes into account other aspects of the women's empowerment pathway and key programming principles, such as:

**Multisectoral Coordination:** Community Connector recognizes the need for stronger integration between staff working with savings groups and staff promoting improved nutrition and caring practices. Staff do not need to become experts in all sectors to communicate key messages from different sectors to beneficiaries.

**Women's Time and Labor:** The more intensive home-stead garden component initially promoted by Community Connector was making excessive demands on women's time and labor. The activity adjusted to encourage women to select cash crops, which provided them with the income to apply their knowledge of improved nutrition to purchase a diversity of nutritious foods from local markets. The activity is working to ensure these foods are available for local purchase. Gender interventions also look at reducing women's workload by assisting households to plan, work, and make decisions together.

**Targeting Vulnerable Groups:** Community Connector works primarily with groups that existed prior to the activity. Research indicated that the most vulnerable households, including nutritionally disadvantaged and female-headed households, were often excluded. The activity is now working to include them as new members.



© Arne Hoel/World Bank

## CONCLUSIONS AND OBSERVATIONS ON THE APPLICATION OF PATHWAYS AND PRINCIPLES

The pathways and principles are useful frameworks for exploring how current interventions are working to achieve nutritional goals. The vignettes in this brief highlight proactive approaches toward improved nutrition by empowering women using the components highlighted in the figure on page 1. They also underscore the importance of ensuring that increased income will be spent, at least in part, on improved diets, water, hygiene and sanitation, and health care. Both examples further demonstrate the necessity of applying key programming principles for improving nutrition through agriculture while working along the women's empowerment pathway. Targeting vulnerable groups, coordinating with other sectors, empowering women, and incorporating nutrition education are featured in the women's empowerment vignettes. All 10 programming principles can be factored into program design and implementation.

### PROGRAMMING PRINCIPLES

1. Incorporate explicit nutrition objectives and indicators into design.
2. Assess the local context.
3. Target the vulnerable and improve equity.
4. Collaborate and coordinate with other sectors.
5. Maintain or improve the natural resource base, particularly water resources.
6. Empower women.
7. Facilitate production diversification, and increase production of nutrient-dense crops and livestock.
8. Improve processing, storage, and preservation of food.
9. Expand market access for vulnerable groups, and expand markets for nutritious foods.
10. Incorporate nutrition promotion and education that builds on local knowledge.



© Aaron Buchsbaum/JSI

The pathways and principles provide a powerful framework for confirming assumptions and defining causal relationships between activity components, which are critical to activity design, monitoring, and evaluation. In applying the pathways and principles described above and illustrated in the vignettes, Feed the Future presents opportunities for learning at scale. Use of appropriate process monitoring indicators and sharing examples from the field are two effective ways for Feed the Future to build evidence on how women's empowerment through agriculture can work to improve nutrition.

## REFERENCES

- Herforth, Anna, Andrew Jones, and Per Pinstrup-Andersen. 2012. *Prioritizing Nutrition in Agriculture and Rural Development: Guiding Principles for Operational Investments*. Health, Nutrition, and Population (HNP) Discussion Paper. Washington, DC: The World Bank. [http://dyson.cornell.edu/faculty\\_sites/pinstrup/pdfs/HerforthJonesPPA.pdf](http://dyson.cornell.edu/faculty_sites/pinstrup/pdfs/HerforthJonesPPA.pdf).
- Herforth, Anna, and Jody Harris. 2014. *Understanding and Applying Primary Pathways and Principles. Brief #1. Improving Nutrition Through Agriculture Technical Brief Series*. Arlington, VA: USAID/Strengthening Partnerships, Results, and Innovations in Nutrition Globally (SPRING) Project.
- Ruel, Marie T., and Harold Alderman. 2013. “Nutrition-Sensitive Interventions and Programmes: How Can They Help to Accelerate Progress in Improving Maternal and Child Nutrition?” *The Lancet* 382:536-551.
- Smith, Lisa C., and Lawrence Haddad. 2000. *Explaining Child Malnutrition in Developing Countries: A Cross-Country Analysis*. Washington, DC: International Food Policy Research Institute (IFPRI). <http://www.ifpri.org/sites/default/files/publications/rr111.pdf>.
- Smith, Lisa C., Usha Ramakrishnan, Aida Ndiaye, Lawrence Haddad, and Reynaldo Martorell. 2003. *The Importance of Women’s Status for Child Nutrition in Developing Countries*. IFPRI Research Report 131. Washington, DC: IFPRI. <http://www.ifpri.org/sites/default/files/publications/rr131.pdf>.
- United Nations Children’s Fund (UNICEF). 2011. *Gender Influences on Child Survival, Health and Nutrition: A Narrative Review*. New York: UNICEF; Liverpool, United Kingdom: Liverpool School of Tropical Medicine. [http://www.unicef.org/gender/files/Gender\\_Influences\\_on\\_Child\\_Survival\\_a\\_Narrative\\_review.pdf](http://www.unicef.org/gender/files/Gender_Influences_on_Child_Survival_a_Narrative_review.pdf).



## LINKING AGRICULTURE & NUTRITION PATHWAYS | PRINCIPLES | PRACTICE

Access all four briefs from SPRING’s *Improving Nutrition through Agriculture* series:

[www.spring-nutrition.org/ag-nut\\_tech\\_brief](http://www.spring-nutrition.org/ag-nut_tech_brief)

SPRING is working with USAID Missions to understand and apply a set of agriculture-nutrition pathways and principles. Through targeted technical assistance and knowledge-sharing, this work aims to improve the design, implementation, and monitoring of Feed the Future activities.

Visit us: <http://www.spring-nutrition.org/technical-areas/ag-nut>