



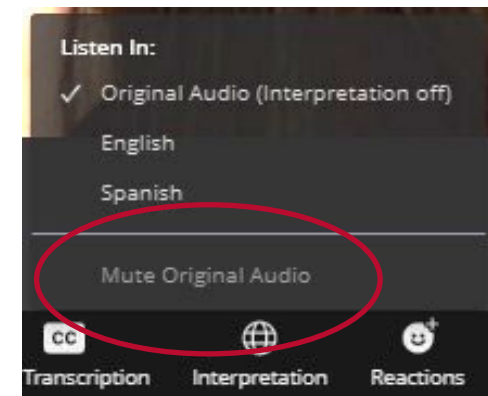
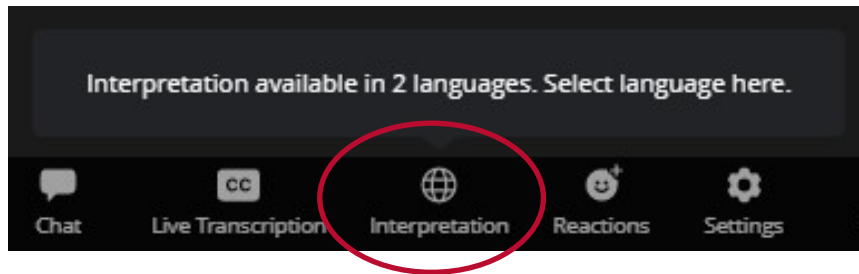
Overview of the 2023 Joint Malnutrition Estimates and Strengthening Anthropometric Data Collection to Improve Future Estimates

June 27, 2023
9:00-10:00 AM EDT (GMT -4)



Zoom Webinar Reminders

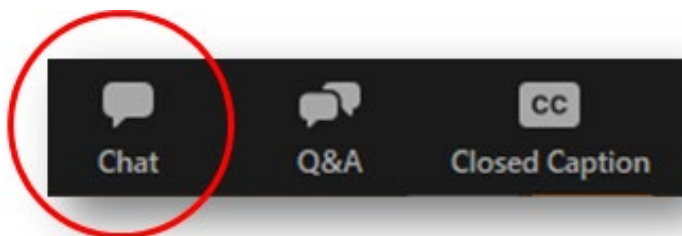
English	<p>Click the Interpretation icon to have the option to hear the meeting in Arabic. To hear the webinar only in Arabic, select Mute Original Audio.</p> <p>If you are listening in English, please make sure to select English from the interpretation channels to hear our panelist presentation when it is interpreted from Arabic to English.</p>
Arabic	<p>انقر على أيقونة "ترجمة فورية" للاستماع إلى الندوة باللغة العربية. للاستماع إلى الندوة باللغة العربية فقط ، يمكنك تعطيل الصوت الأصلي.</p>



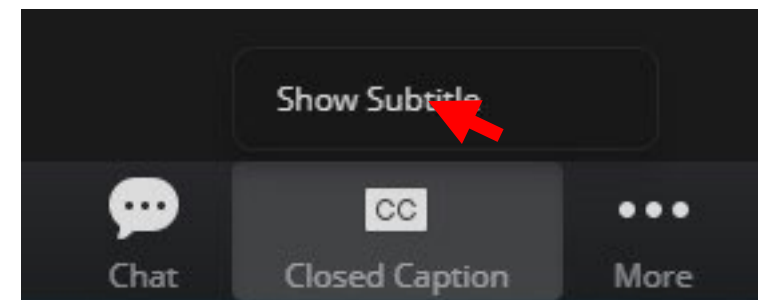
Zoom Webinar Reminders



- If at any point during today's webinar you are unable to hear the speakers, please make sure you've connected your audio by selecting the headphones icon.

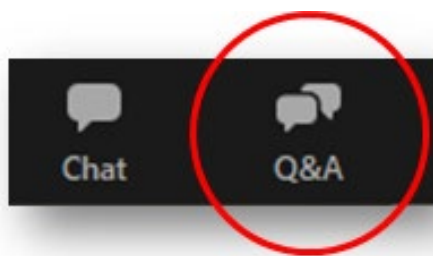


- Please send a message to *Everyone* in the chat box to introduce yourself or ask for support during today's webinar.
- Closed captioning in English has been enable for this meeting, to view the live English subtitles on your screen, click on the CC icon and select to *Show Subtitle*.
- Finally, please note that this meeting is being recorded and live streamed.

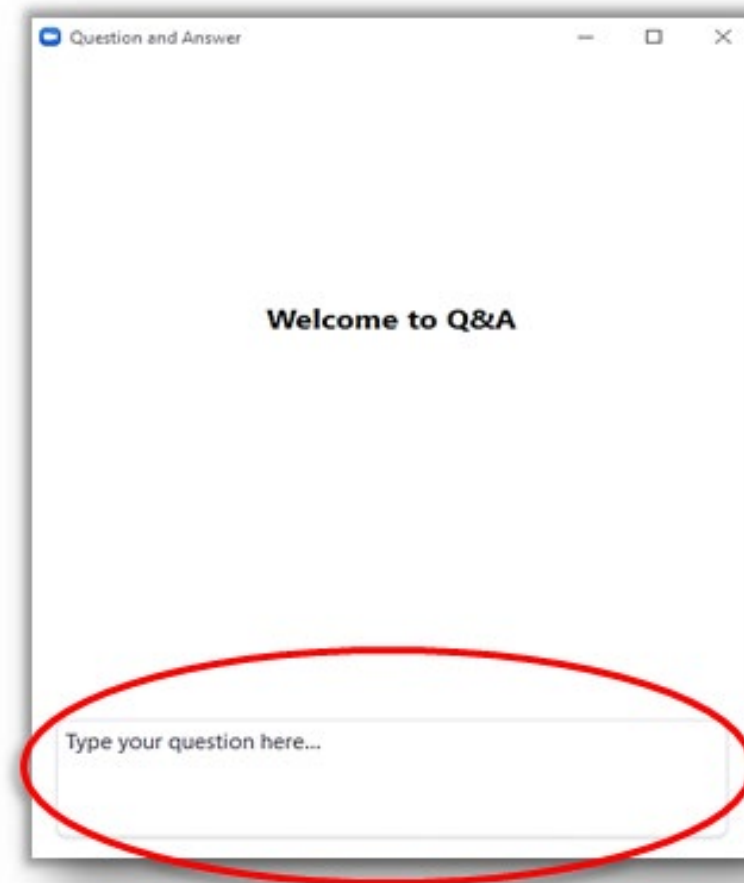


Zoom Webinar Reminders

Please submit your questions for the panelists in the Q&A box.



Panelists will either reply back to you via text in the Q&A box or will answer your question during the QA discussion portion of the webinar.



Welcome and Opening Remarks



Silvia Alayon

Director of Measurement, USAID Advancing Nutrition

Agenda

1. Welcome and webinar overview
2. 2023 Joint Malnutrition Estimates launch overview
3. Research agenda on anthropometric data quality
4. Panelists presentations
5. Q&A session
6. Closing

Overview of the 2023 Joint Malnutrition Estimates and Strengthening Anthropometric Data Collection to Improve Future Estimates



Richard Kumapley
Epidemiologist, WHO



Sorrel Namaste
Senior Nutrition Advisor, DHS

THREE FACES OF MALNUTRITION, 2023

STUNTING



148 million

children under 5 are affected by *stunting* (too short for their age)

WASTING

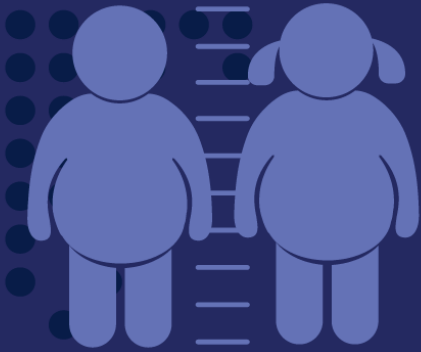


At least

45 million

children under 5 are affected by *wasting* (too thin for their height) at any given time

OVERWEIGHT



37 million

children under 5 are affected by *overweight*

The JME Team

- **UNICEF** - Chika Hayashi, Julia Krasevec, Yoshito Kawakatsu, Robert Johnston and Vrinda Mehra
- **WHO** - Elaine Borghi, Elisa Dominguez, Monica Flores-Urrutia, Giovanna Gatica-Domínguez and Richard Kumapley
- **World Bank** - Umar Serajuddin, Emi Suzuki

Most children with malnutrition live in Africa and Asia



In 2022, more than half of all children under 5 affected by stunting lived in Asia and two out of five lived in Africa



In 2022, 70 per cent of all children under 5 affected by wasting lived in Asia and more than one quarter lived in Africa



In 2022, almost half of all children under 5 affected by overweight lived in Asia and more than one quarter lived in Africa

Globally we are not on track to achieve the 2030 global nutrition targets

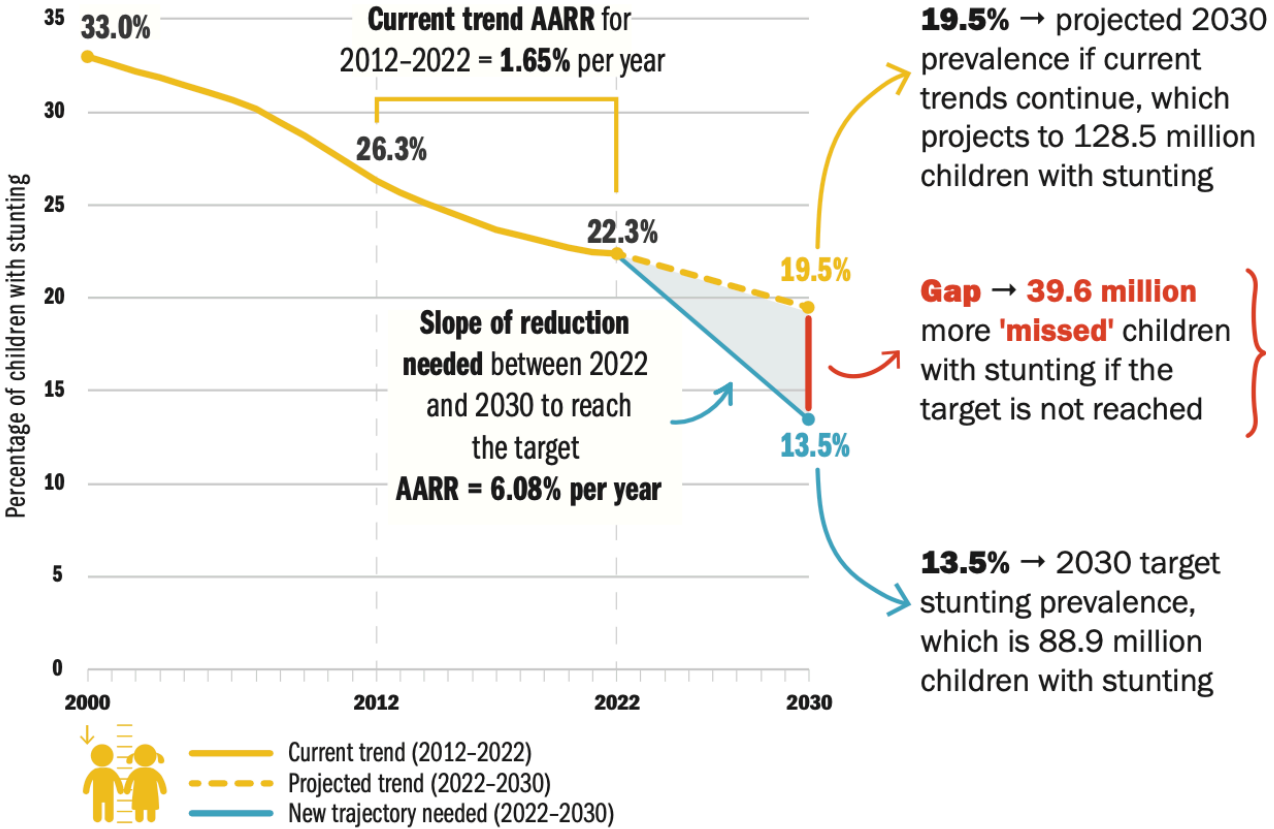
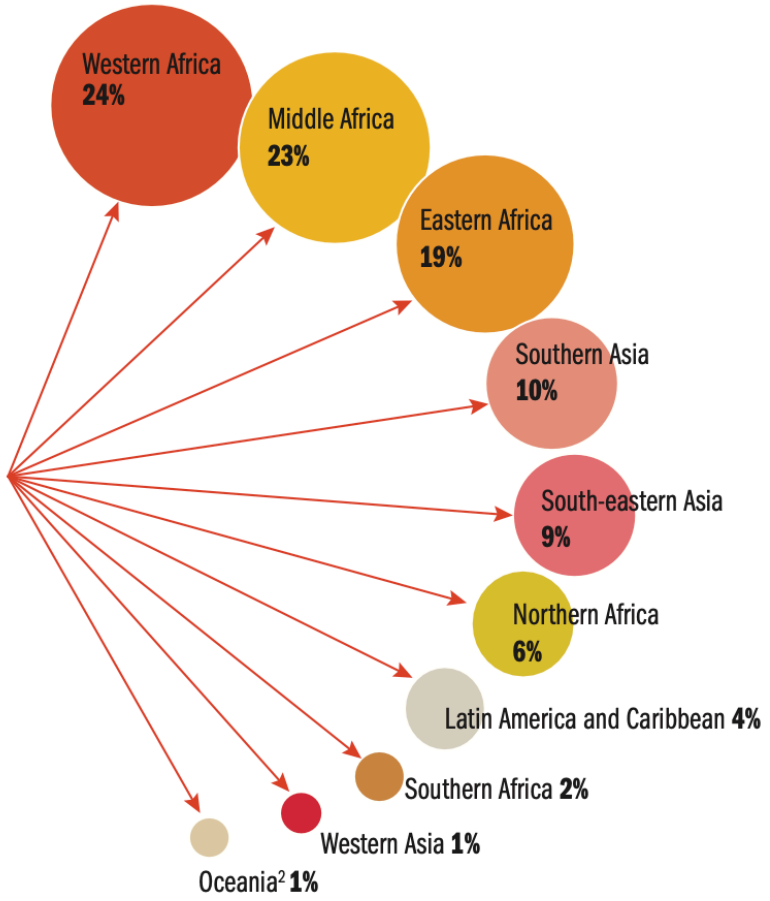


Figure 1b. Breakdown of share of **missed**¹ children in 2030



Percentage of children with stunting 2000–2022 and projections to 2030, global (left); and (b) regional breakdown of share of ‘missed’ children in 2030 if current trends continue (right). Note: AARR = annual average rate of reduction.

Process

Country input data – collection and review

Data collection

Regular searches for data sources to update the Data Source Catalogue

Liaise with countries to get national data sources and raw data

Data Processing

Apply standard analysis to calculate estimates as per standard *definitions* and for key disaggregations

Generate data quality outputs

Done by JME team or local counterparts

Data Review

Examples of parameters reviewed:

- Equipment
- Training
- Sampling
- Response rates
- Missing data
- Distribution of ages weights, heights
- % implausible values (WHO flags) (>1%)
- SD of z-scores (>2 for HAZ, >1.7 for WHZ)
- Plausibility of trends

Joint review

Joint inter-agency decision (include or not)

Summarize rationale when not included

Aim to develop a country dataset with estimates from sources with *consistent data quality and representativeness* to foster *comparability* of estimates across location and time

Modelling, aggregation and dissemination

JME dataset

Compilation and extensive checking of country dataset (of sources included and not included)

Generate imputed SEs for sources when unavailable

Modelling/ aggregation

Run country models (ST & OW) and regional models (WA & SW)

Extensive checking of outputs

Aggregation of ST and OW for regional and global estimates

Country consultation

Prepare background materials

Registration of SDG focal points

Consultation on preliminary estimates

Update country dataset and models with sources included from consultation

Share final estimates

Final Estimates

Prepare dissemination materials for various outlets (e.g. UNSD/ SDG, JME websites, etc.)

Improving the quality of child malnutrition data for SDG monitoring: mapping the unfinished research agenda

Sorrel Namaste¹ on behalf of the WHO-UNICEF TEAM Anthropometry Working Group

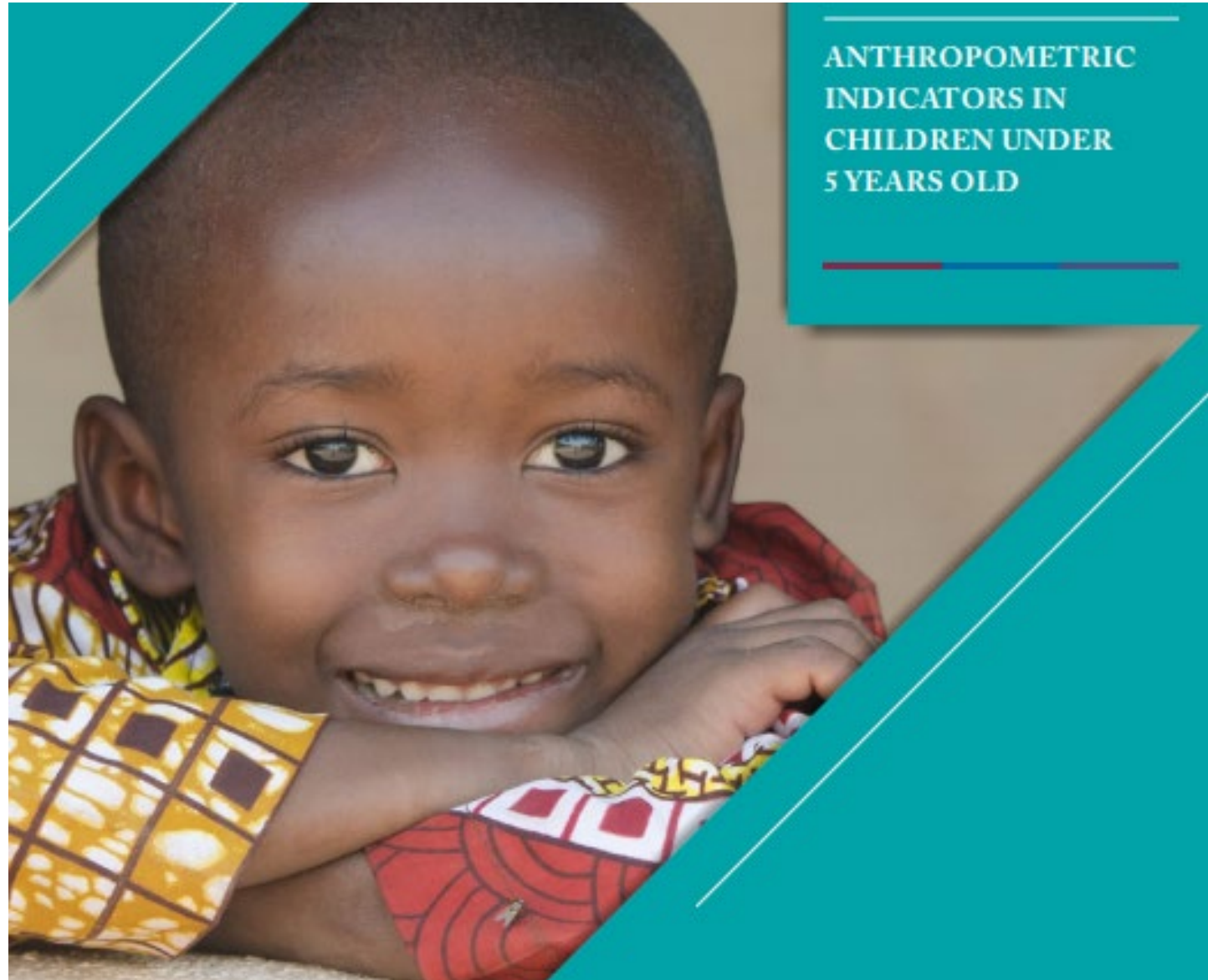
¹The Demographic and Health Survey Program



**WHO-UNICEF
TEAM
Anthropometry
Research
Working Group**

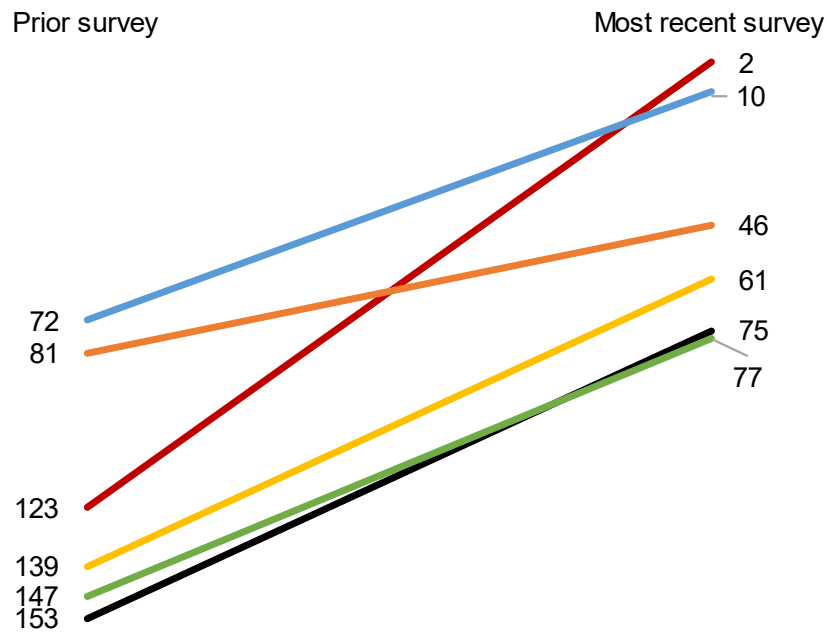
Margit Bach	UNICEF
Oleg Bilukha	SMART/CDC
Elaine Borghi	WHO
Rafa Flores-Ayala	CDC
Joseph Grange	USAID
Robert Johnson	UNICEF
Monica Kothari	ICF
Julia Krasevec	UNICEF
Richard Kumapley	WHO
Eva Leidman	CDC
Zuguo Mei	CDC
Erin Milner	USAID
Sorrel Namaste	ICF/DHS
Cynthia Ogden	CDC
Teresa Shamah	INSP
Elisabeth Sommerfelt	Independent
Andrea Warren	USAID
Bradley Woodruff	Independent

Accurate anthropometric data are critical to inform policy and programs

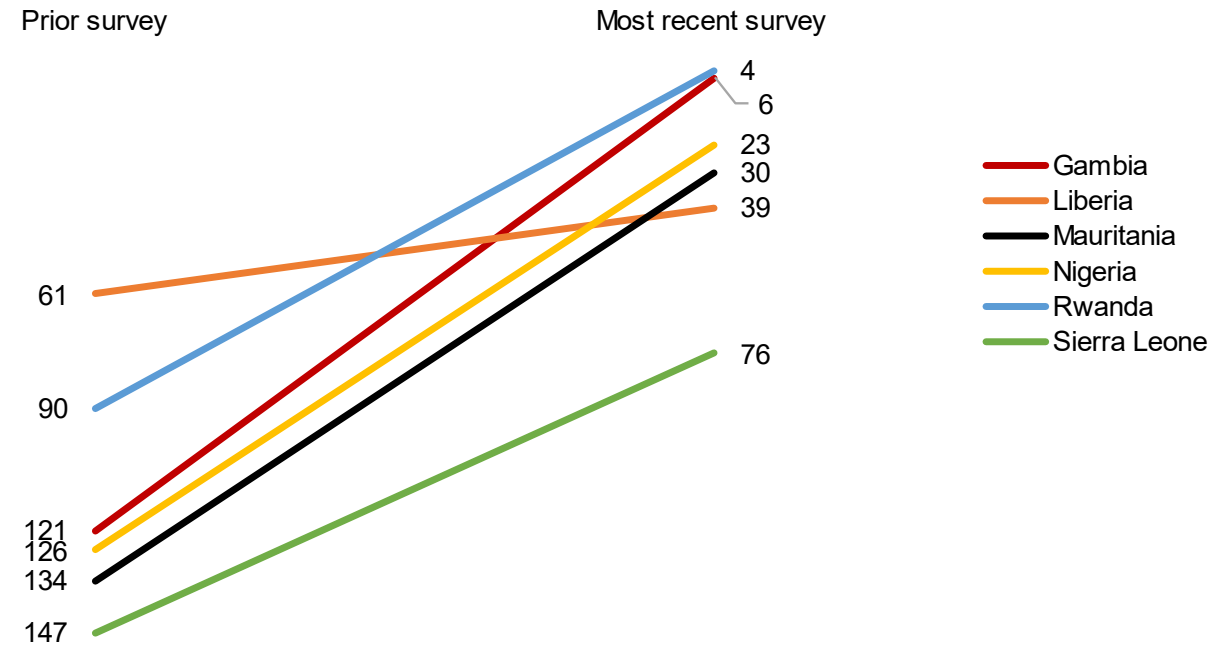


Impact of enhanced training and data quality procedures on anthropometric data quality

Height-for-Age/Stunting ranking



Weight-for-height/Wasting/Overweight ranking



Research agenda



- Anthropometric standardization exercises
- **Technological innovations for anthropometric measurement instruments**
- **Age collection methodology in population-based surveys to generate anthropometric Z-scores**
- Replicate length/height measurement techniques
- **Hair obstructions in height/length measurement and clothing and heavy jewelry obstructions in weight measurement**
- Anthropometric remeasurement quality assurance procedures during data collection
- Biological and statistical flagging of anthropometric Z-scores
- Thresholds for anthropometric data quality indicators
- Random and systematic error in anthropometric estimates

Research briefs



STATEMENT OF
PROBLEM



RESEARCH QUESTIONS
AND APPROACH



PROPOSED RESEARCH
APPROACH



RESEARCH ROAD MAP

Types of research studies

Desk reviews

Key informant interviews

Delphi method

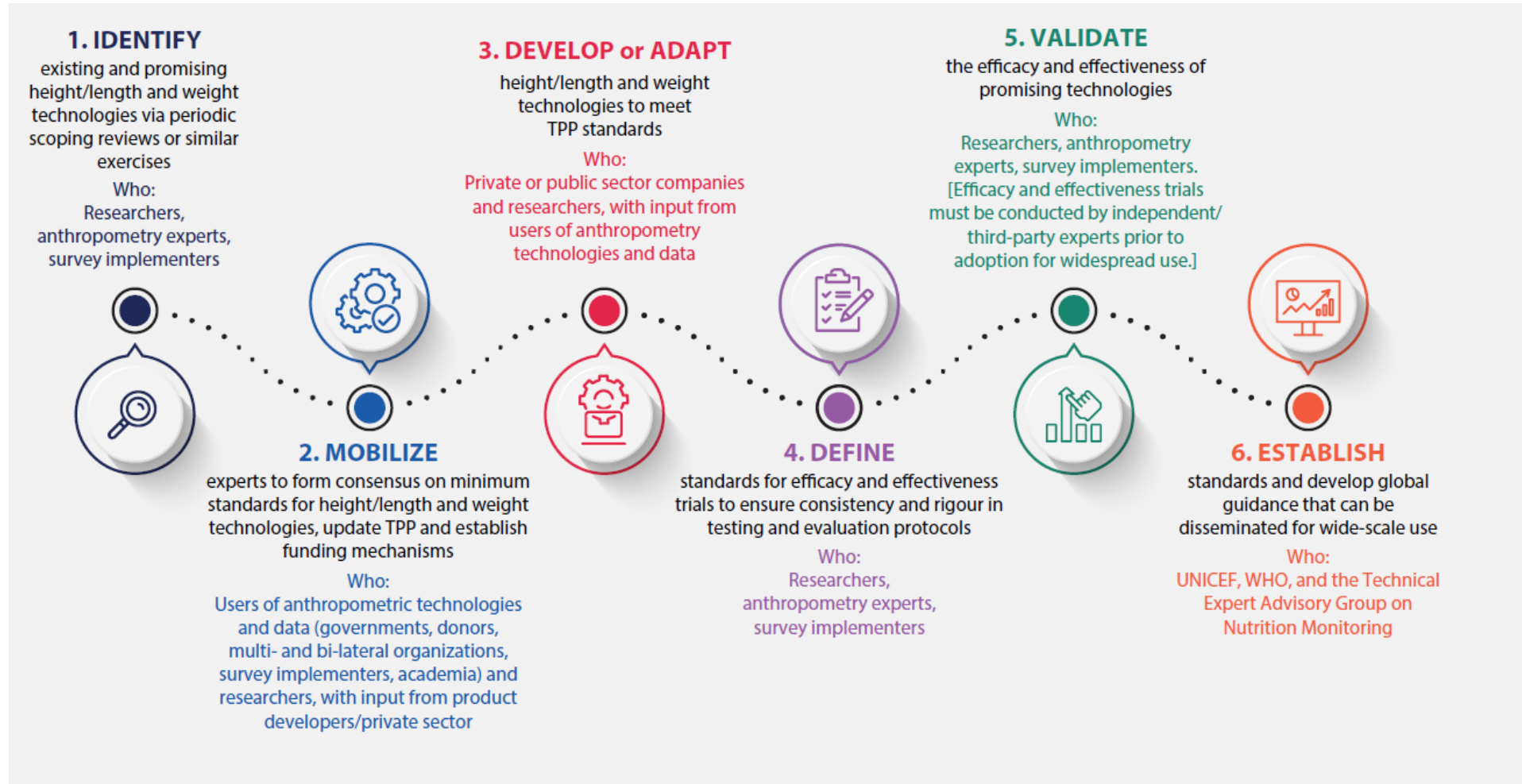
Secondary analysis

Simulation modelling

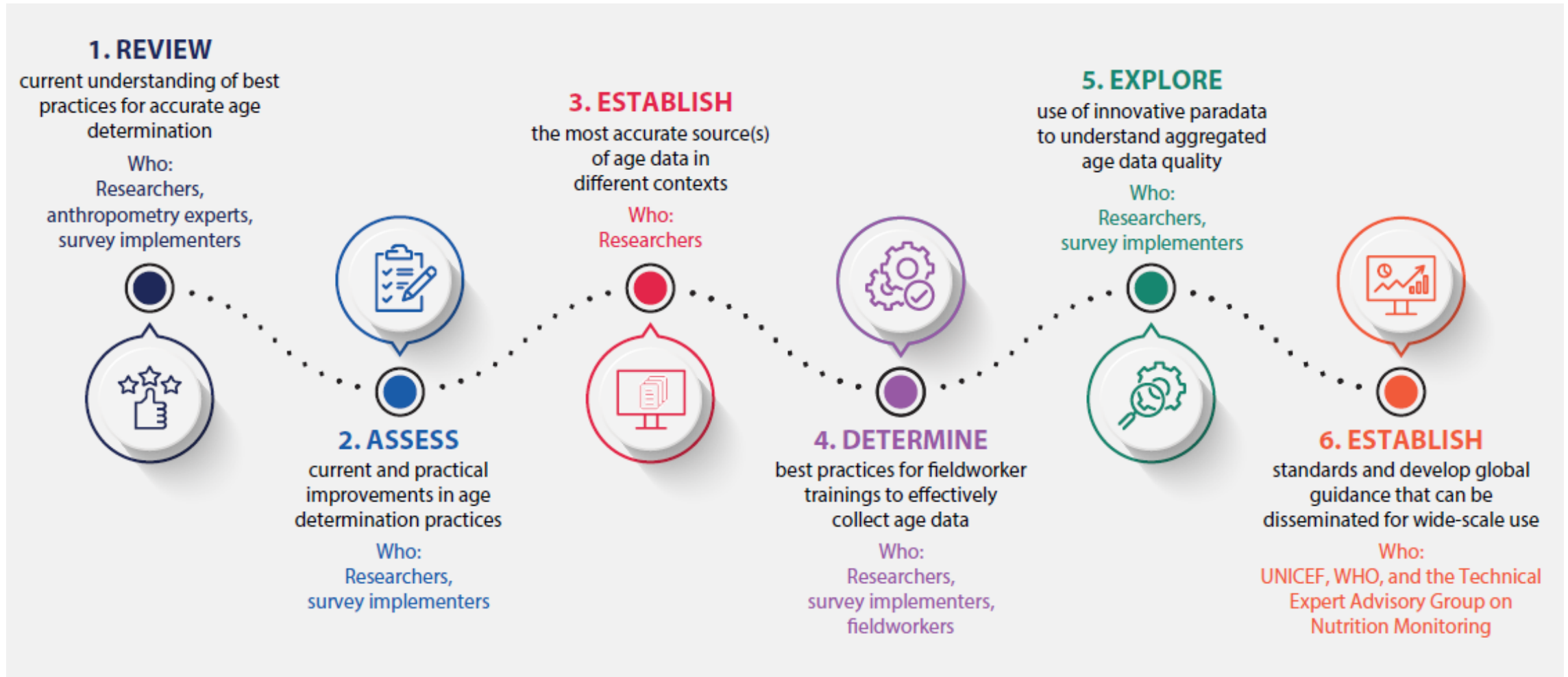
Efficacy studies

Effectiveness studies

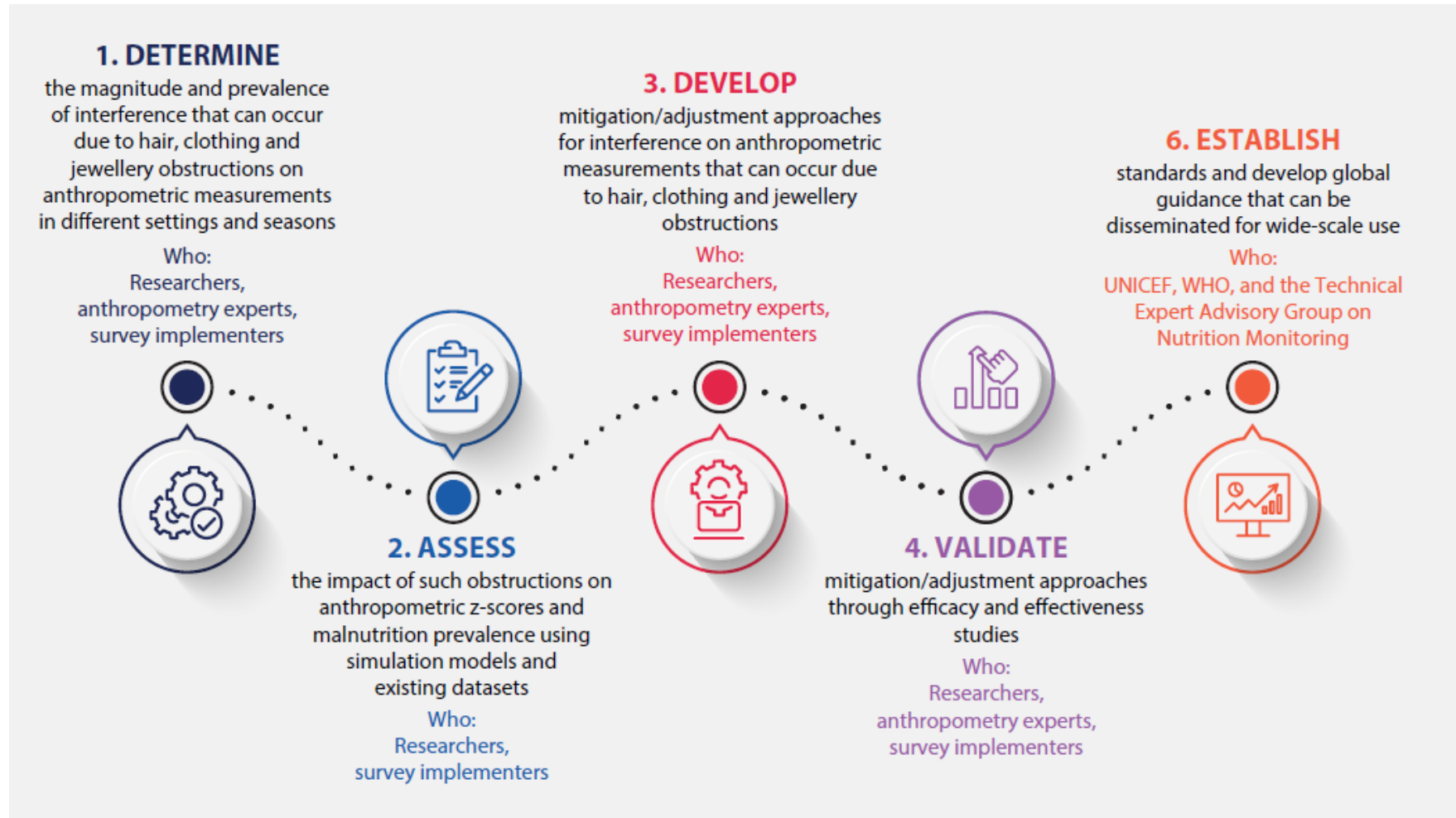
Technological innovations for anthropometric measurement instruments



Age collection methodology in population-based surveys to generate anthropometric Z-scores



Hair obstructions in height/length measurement and clothing and heavy jewelry obstructions in weight measurement



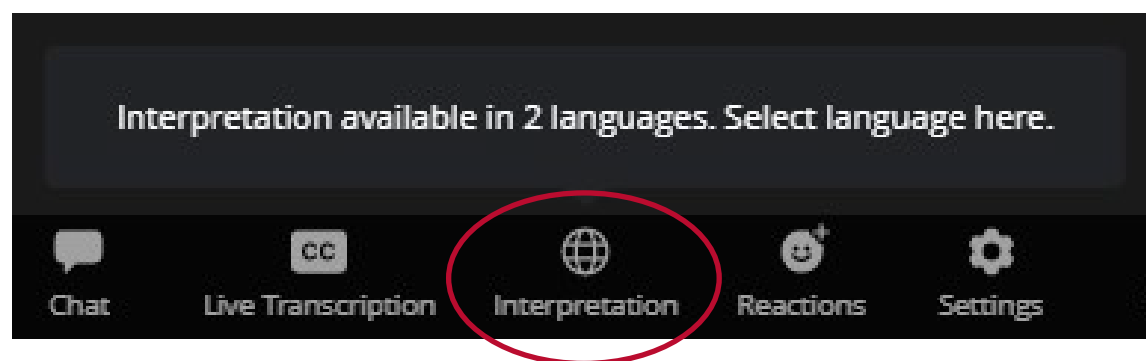


Calling interested parties

- Researchers interested in taking up these research priorities
- Funders interested in investing in and supporting this work
- Evidence generated will be used to update global guidance
- The TEAM Working Group on Anthropometric Data Quality will serve as a coordinating body to avoid duplication and to ensure that the research meets the intended objectives.

Zoom Webinar Reminders

If you are listening in English, please make sure **to select English from the interpretation channels** to hear our first panelist presentation being translated from Arabic to English.

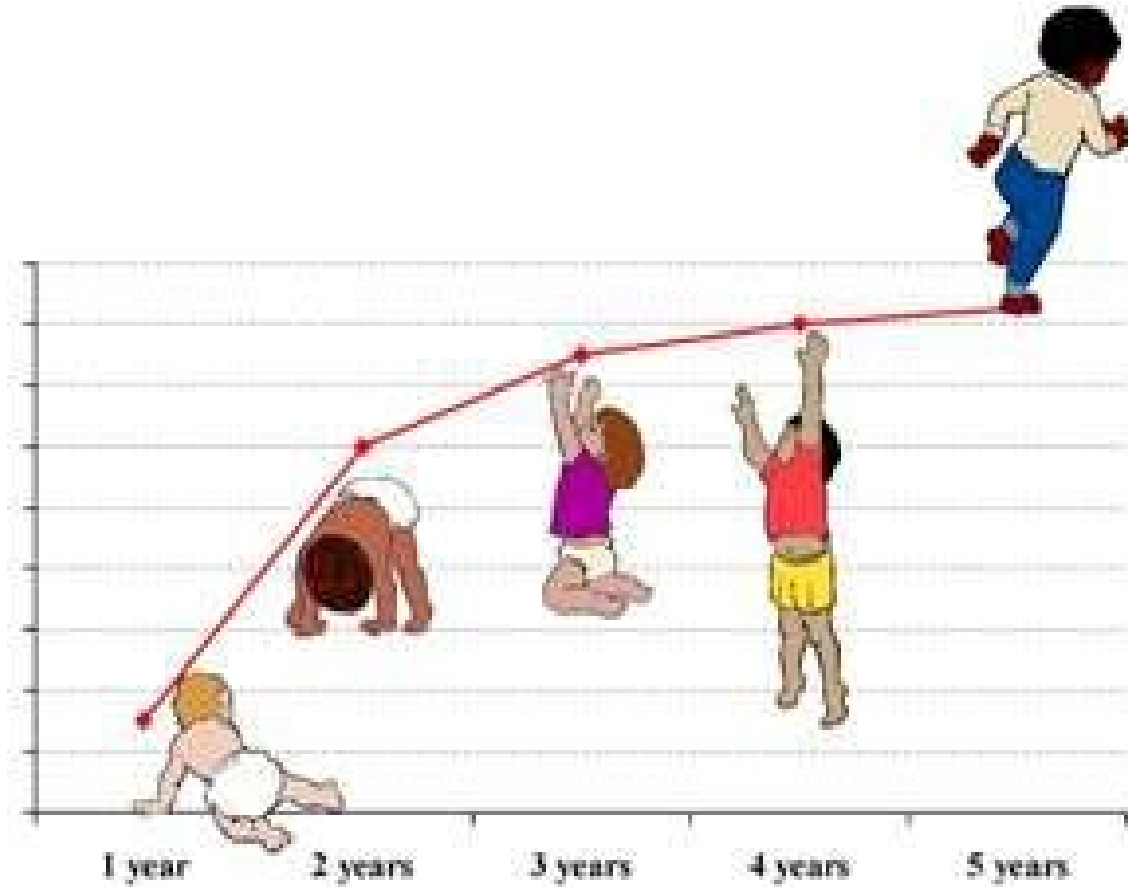


Panelists Presentations

Walaa AlHadidi

Statistical Engineer, Jordan Department of Statistics

القياسات الحيوية في الاردن التحديات والنجاحات



ولاء الحديدي بالنيابة عن فريق عمل
القياسات البشرية

مسح السكان والصحة الاسرية الاردن
2022/2023



الحصول على بيانات عالية الجودة
وممثلة للمجتمع لتسهم في رسم
السياسات وتحقيق أهداف التنمية
المستدامة

مرحلة التدريب

- اتخذت ادارة المسح اجراءات خاصة بشأن تدريب الفاحصات حيث أنه تم بشكل منفصل تماما عن بقية الفريق مما ساهم في توحيد المفاهيم لدى الفاحصات.
- تم اجراء التقييس في مركز صحي تحت رعاية وزارة الصحة ضمن المعايير المطلوبة من قبل ادارة المسح.
- توفير الفئة العمرية المطلوبة من الأطفال بدعم من ادارة المسح من خلال الهدايا المقدمة للأطفال ومن خلال العلاقات الشخصية والمجتمع المحلي وبأخذ مواعيد مسبقة مع الاسر.
- تم اختيار الفاحصات وفق معايير (الامتحان الورقي) وتخصصات متفق عليها من ادارة المسح (المختبرات الطبية و الصيدلة) والنظرة الشخصية لمساعد الفحوصات وبعد اجتياز جميع الفاحصات اختبار التقييس.

الميدان

- قامت ادارة المسح بحملة اعلامية مكثفة وبتركيز كبير على الفحوصات وضرورة التعاون مع الفاحصات بهذا الأمر.
- تميزت الفرق بروح التعاون مما خفف على الفاحصات عبئ حمل المعدات والتنقل في المناطق المختلفة.
- تميزت الفاحصات بالهدوء والاقناع للحصول على البيانات بجودة ودقة عالية.
- تتبع سير العمل في الميدان بشكل يومي من خلال Dashboard مما كان له الأثر الكبير في تتبع دقة وضبط البيانات.
- معالجة جميع الملاحظات في الميدان بشكل مباشر من خلال قنوات التواصل المفتوحه (هاتفياً أو عن طريق مجموعات التواصل الاجتماعي) بين ادارة المسح (مساعدة الفحوصات و الفنيين) والفاحصات.
- استخدام قوائم التحقق للقياسات الطول والوزن وفحص الدم.
- نسبة تقبل الاسر لعودة الفاحصات لإعادة القياس ممتازة بسبب تميز الفاحصات والتواصل مع الاسر في بعض الحالات حيث أن نسبة الإستجابة لإعادة القياس 94%

الصعوبات والتحديات

❖ صعوبات أثناء التدريب

- توفير العدد الكافي من الاطفال لمرحلة التقييس
- للفئات العمرية المطلوبة
- مكان مناسب لإجراءات التقييس
- العدد الكبير للفاحصات (34 فاحصة)
- المعدات اللازمة لإجراء التقييس
- إختيار الفاحصات

❖ صعوبات الميدان

- قبول الاسر للفحوصات بسبب طول الفترة الزمنية للإستمارات
- المعدات الخاصة بالقياس ثقيلة
- الطبيعة الموجودة في الاردن تتميز بالجبال مما زاد صعوبة العمل
- الصعوبة بإقناع الاسر في ما يخص فحوصات الدم
- تطبيق الإجراءات وفق ما تم التدريب عليه باستخدام قوائم التحقق
- العودة الى الاسر التي تم اختيارها لإعادة القياس



اهم النجاحات

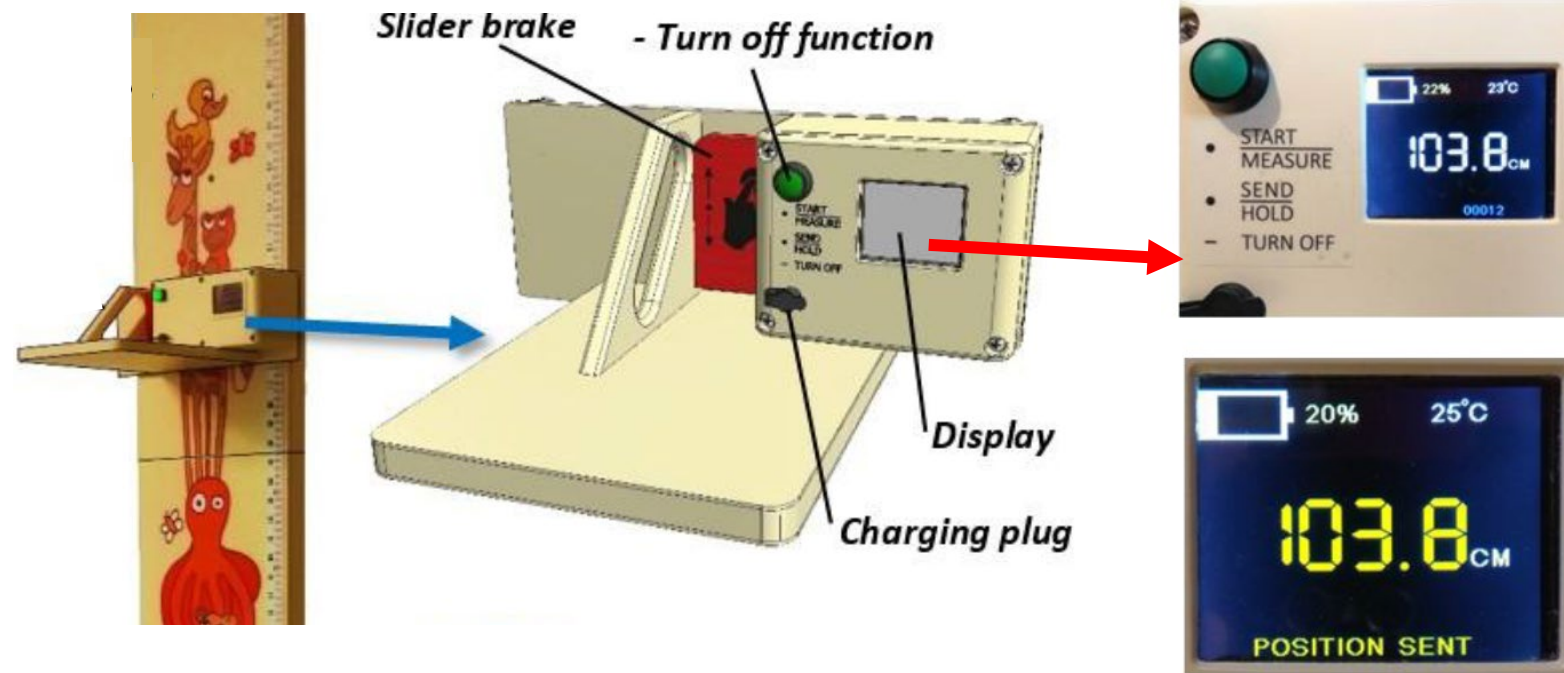
- الحصول على تهنئة من ICF و USAD بسبب النجاح الذي تم انجازه في التدريب وخاصة تمرين التقييس رغم كل المعوقات حيث أنه يتم لأول مرة داخل مركز صحي.
- عدم تجاوز الأيام المعتمدة للتدريب حيث أن 29 فاحصة اجتزن تمرين التقييس من أول مرة.
- بيانات ذات جودة ودقة عالية وفق مؤشرات جودة البيانات.
- نسب الرفض أو عدم الاستجابة قليلة حيث أن نسبة الرفض للقياس للأطفال لم تتجاوز 3.9% وللسيديات 5.1% ولإعادة القياس 1.6% .
- الإختيار الموفق لفاحصات ذات مؤهلات طبية (الصيدلة والمختبرات طبية) مما ساهم في ارتفاع نسبة القبول والدقة في الفحوصات.

Panelists Presentations



Maggie Kalino
MICS Consultant, UNICEF

What is a digital board and why use one



- A digital board has the same properties as current height boards - but **with a tape reader and digital display**
- Data can be downloaded directly to CAPI
- Can support elimination of reading and recording errors
- Other digital boards exist – but we need one that can stand up to difficult survey field conditions





Panelists Presentations



Hailu Wondim
Senior Program Manager, SMART

Please note that there are no slides for this presentation, only verbal remarks.

Question and Answer Discussion

Please submit questions for the panelists in the Q&A box



Closing Remarks





USAID ADVANCING NUTRITION

IMPLEMENTED BY:

JSI Research & Training Institute, Inc.

2733 Crystal Drive

4th Floor

Arlington, VA 22202

Phone: 703-528-7474

Email: info@advancingnutrition.org

Internet: advancingnutrition.org

USAID Advancing Nutrition is the Agency's flagship multi-sectoral nutrition project, addressing the root causes of malnutrition to save lives and enhance long-term health and development.

This presentation is made possible by the generous support of the American people through the United States Agency for International Development (USAID). The contents are the responsibility of JSI Research & Training Institute, Inc. (JSI), and do not necessarily reflect the views of USAID or the United States government.