



JILEYIN ANDI KONGUWA

**Yallande ro bananiyin na kumbu ngela kuluwu tiyi
ro cirayin coron awo'a jawuro fayida mbeyi du ?**

AYI AWA RO CANDO YALLANJI RO CIDIN NA KUMBU YEN ?

Awa, yallando ro awo misalle ro wollowo !

1. AYI KƏRI FOTO ADU YEN RUWON ?

- Fuwuma jama ye am tiya dəriyana du ro duno cin kəla bərzəmja coro ammen don sandi kuwa kuru awa

2. KWA KO AWA JILEYI RO WALLO WA RAWO?

*- kwa awo ruwo ye
- Kwa daraja'a coro jama yen
- Kwa nabtu kəji ya*

3. JILEYIN KUMBU NGƏLAMA NANDI RO BANANJA KONGUWA AWO RUWO YE KURU DARAJA'A CORO JAMA YENNO KALANJAYIN ?

*- Kamuwa deyeni-a ngəri nganjinna-a banano duwa-duwan kurun cama'a har ngawo kəndawu 3 casambuna yen
- Kamuwa deyeni-a ngəri nganjinna-a banano na kumbu ngəla kuluwu tiyi ro cirayinnen fandon ko sandiro yikuwuwo kumbu awo'a ndilewa simme cirayinna cadana du
- Juwal cida'a la fadoye cistuwwu yen*

4. JILEYIN YANDI KONGUWA KURU AWA'A CIDA FADOYE KƏNDOMA DON YALLANDE YIRGALTU RO KAMANDE BANA NIYEN ?

*- Coro kufu bana yero ngawo
- Cida juruwu fadon karungunne ro duno yiyi
- Ma'aranta lorsaye ro himma yiye
- Cida wuri fadoye ro duno yiye*



JILEYIN KUMBU KAMUWA DEYENI-A NGƏRI NGAMJINNE-A IDA KAYAYIN ?

Lawar kəla kurun kamuwa deyeni casayinnen kuru kumbu coron awo'a kuluwu cirayinna tram-tram simme dabcinna yen !

1. AYI KƏRI FOTO ADU YEN RUWON ?

- *Kuwa la'a tiya kamunju deyeni-a jandeyayin kəla Kenja kurun tiyiro bu cirayinne*
- *Kuwa kamunju deyeni ro kumbu cin karungun nguwo coron awo'a bu cirayinna-a tram-tram simme dabcinna-a cuwudin*
- *Kuwa kamunju ngəri nganjinna ro kumbu cin karungun nguwo coron awo'a bu cirayinna-a tram-tram simme dabcinna-a cuwudin*
- *Bana kuwa ye na kurun Kenja yen kuru masana coron awo'a bu cirayinna-a tram-tram simme dabcinna-a kumbun*

2. AYI NANGARO JAWURO MAHIMMA KAMUWA RO BANATUWU NA KURUN KULUWU CIRAYIN KENJAN KURU NA MASANA KULUWU TIYIRO CIRAYIN CORON AWO'A TRAM-TRAM SIMME DABCINNA KARANAN ?

- *Bana tiyi ro na bu fando yen, kuluwu fando na yamboye-a tiwol jirgaltu ye-a,*
- *Cistuwu kuwa ye jawuro mahimma na kurun Kenja kamuyen*
- *Cistuwu kuwa ye, kərawo tiwolla-a yanjuye-a ye feleyin*

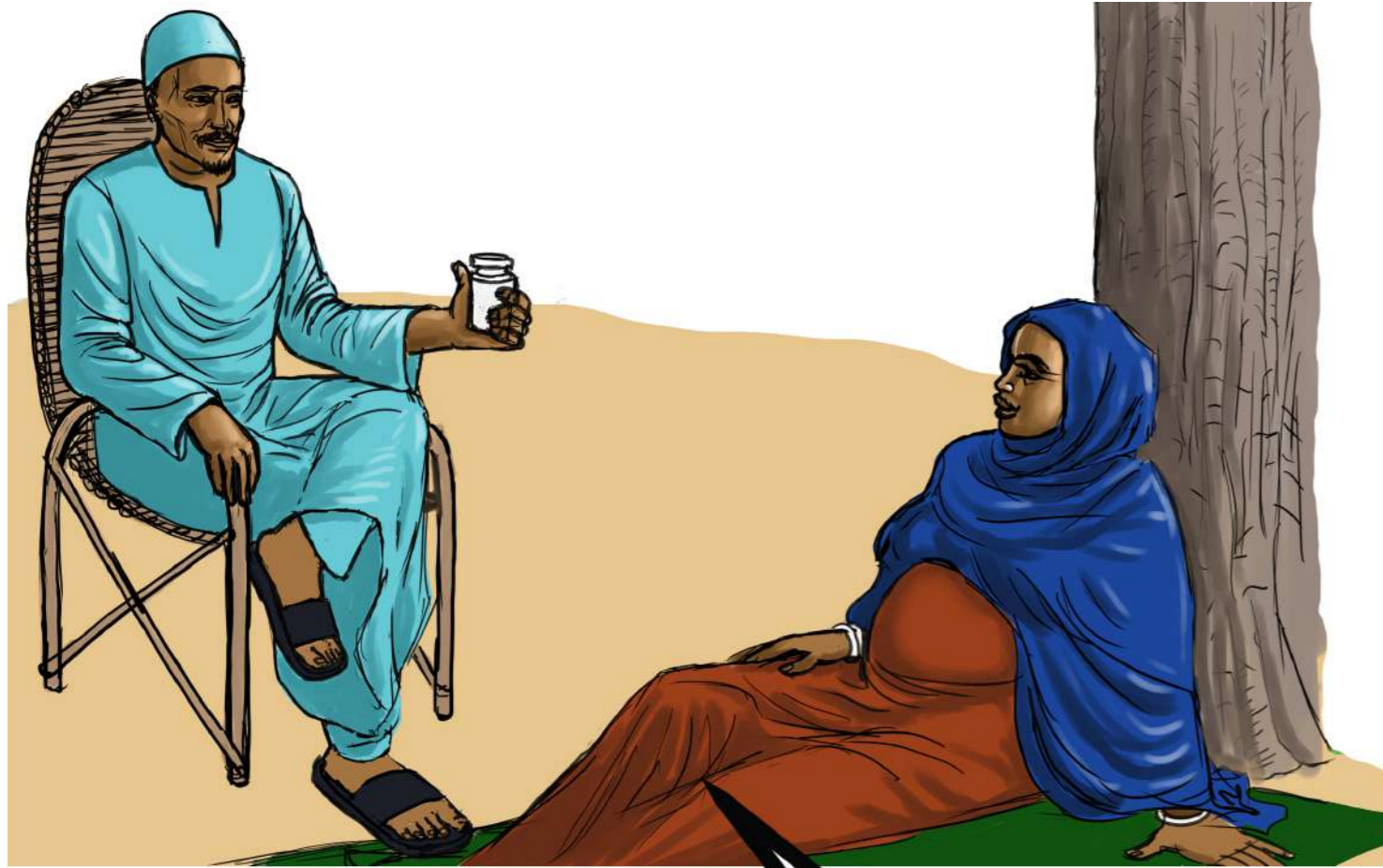
3. TO CORO HAL ADU YEN AWO NGƏLA MBEYI NA ?

- *Kursu fuludu na kurun yiwo kasuwa yen*
- *Don tiya daraja ya na yallanjiyenna-a jama-a kuru kuwa awo misalle ro walda*
- *Don kəngəyanji-a sawanji-a ro awo misalle ro walju*

4. UNDU MANGƏRCU HAL ADU ÇAKU AM YERO DASANADU BADIJAYIN? TO KƏLE AYI DUWON? TO KOKORI JILEYIN DUWON ? JILEYIN KAJIYI CORONJUYE RO KANUWON ?

MAHIM KATUNO YE

Konguwa! Kurun bu yirawo ye Kənja du kamuwa deyeni ro bu cirayin. Kamuwando deyeni ya munano kəla kurun kənja kullummen kuru kəla kumbu buwo coron awo'a kuluwu cirayinna-a tram-tram simme dabcinne-a. sawari litarin manowo.



NGAWO KƏNDA KURUN BU YIRAWO YE KULLUMME SA KAMUWA DEYENIN KURU KAWU 90 NGAWO YOBOYEN

Kamuwando litari ro yartuno kurun cama'a !

1. AYI KƏRI FOTO ADU YEN RUWON ?

- Kam la'a kamunju deyeni-a kam la'a kamunju ngəri nganjinna-a litari ro carta na

2. KAMU RO AYI FAYIDA KURUN BU CIRAYIN DU ?

*- Bu gana ro kayin
- Sa yambo yen rikice-rikicen coro ye dabcin*

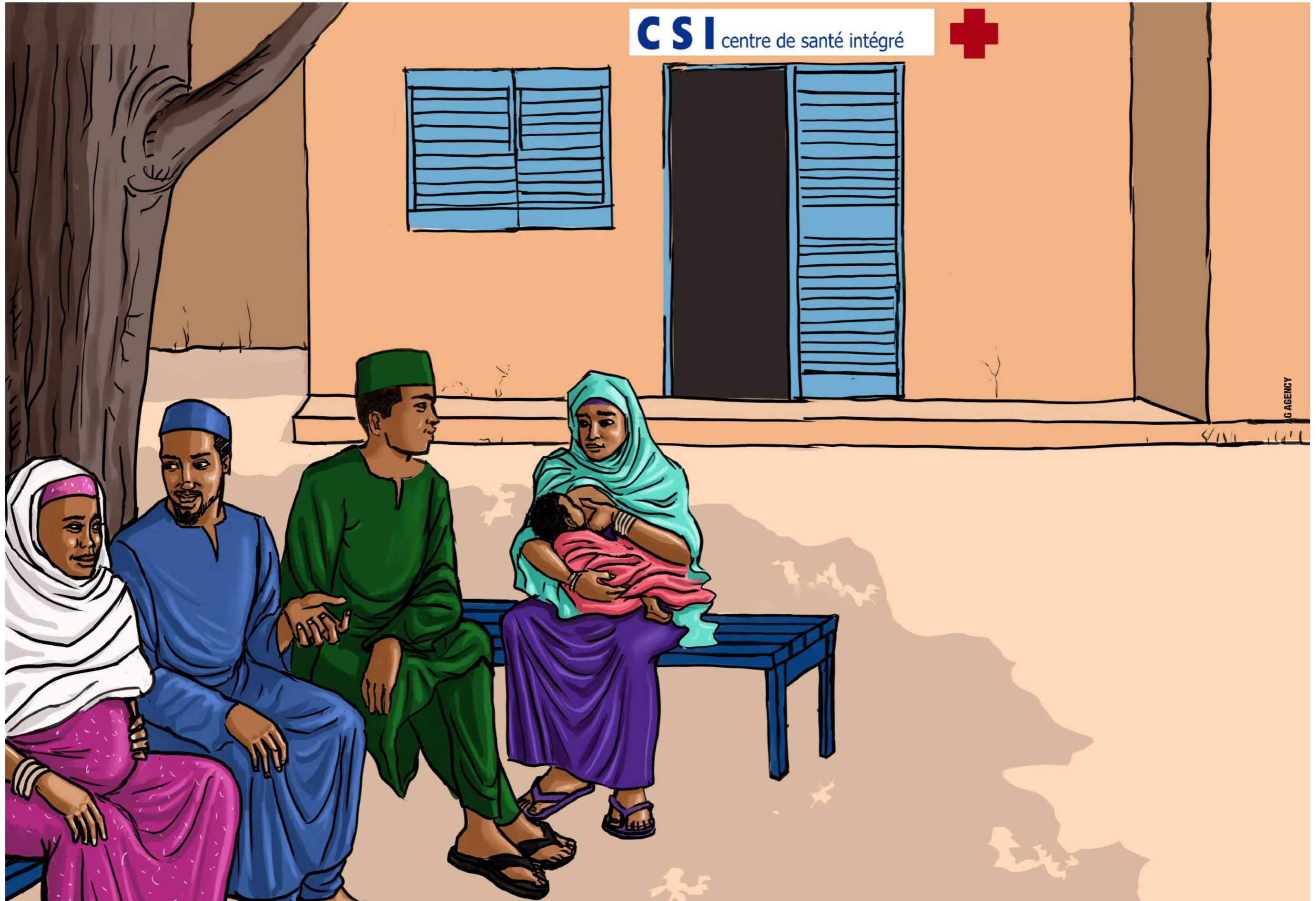
3. TO RIWA LA'A KUWA CORO HAL ADU YEN DAGANA DU CUWANDIN WA?

*- Wuri yewo fuluyin juwal kasuwayenna-a kurun yiwoyenna-a
- Don tiya daraja ya coron yallanjiyenna-a jama-a kuru kuwa awo misalle ro walda
- Kajiyi fuludu kəla yomboyen
- Ilmu yirawo na malum litariyin
- Kuwa ro cistuwu kanbayin*

4. UNDU MANGƏRCU HAL ADU CAKU AM YERO DASANADU BADIJAYIN? TO KƏLE AYI DUWON ? TO KOKORI JILEYIN DUWON ? JILEYIN KAJIYI CORONJUYE RO KANUWON ?

MAHIM KATUNO YE

konguwa ! Ndilewa kamundoye-a tiwol Ndoye-a nangaro tandiya bana no litari ro leja don kurunna-a sawari –a cawandu ro



NGAWO KƏNDA KURUN BU YIRAWO YE KULLUMME SA KAMUWA DEYENIN KURU 90 NGAWO YOBOYEN

Duno kənjo na kurun Kenja kamuwa deyeni-a ngərri nganjinna-a

1. AYI KƏRI FOTO ADU YEN RUWON ?

- Fadoma la'a tiya yanjuyana'a jandeyayin kəla kam candəna kamu ro kurun Kənja ida takciyin

2. KURUNDON AYI NANGARO FADOMA JANDEYAYIN SANDIYA YANJUYANA'A KƏLA KURUN KENJAN ?

*- cistuwu yallanju ro cidin du feleyin
- Kamu ro duno kəljiyin na awo'a fayidatayin kawu kurun bu yirawo Kənja ro
- Sim yiko kanbayin na kurun kənja kamuwa deyeni yen
- Dama waktu Kalkal kurun kənja njadin don illanju fuludu ro*

3. UNDU RO KAMUNDO KULLUM RAKCU BANA CIWORIN NA KURUN BU YIRAWOYEN KƏNJA ?

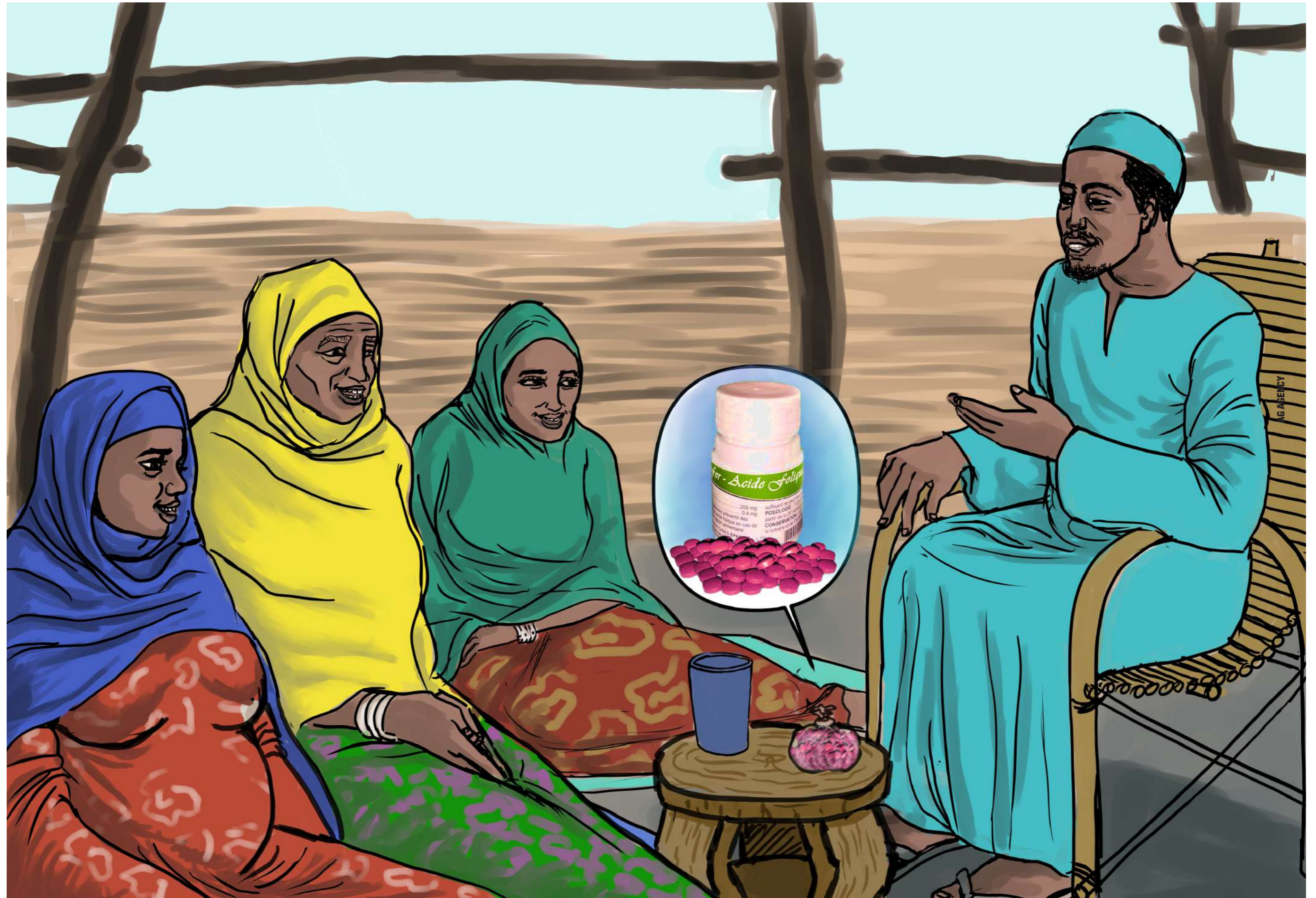
*- kəsayi
- Kənge kuwa ye
- Kəmaski ko koyya*

4. UNDU AWO ADU CIDIN ?

5. UNDU KASAKCU CAKU HAL ADU AM YERO DASANADU BADIJAYIN ?

MAHIM KATUNO YE

Konguwa! Kurun bu yirawo ye Kənja du kamuwa deyeni ro bu cirayin. Kamu deyeni ro banano ida taktuno na kənja kurun bu yirawo, kuru litarin na sawari mada yennen banana.



KUMBU BUWO JIRI-JIRI CORON AWO KULUWU-A BU-A TIYIRO CIRAYINNA KURU KASUWA TRAM-TRAM SIMME DABCINNA-A

Kamuwa deyesi ro kumbu coron awo bu cirayinna-a tram-tram simme dabcinna-a kla-klan yiwo jiwu dan kumbu tasanju ro yirawu kambayi ro

1. AYI KƏRI FOTO ADU YEN RUWON ?

- Kam la'a kasuwu lan fuwu sunuri-a am awo cin karungun caladayinna-a

2. AYI SO KUMBU TIYI RO KULUWU CIRAYIN KURU KASUWA TRAM-TRAM SIMME DABCIN, KONGUWA RO GULJA KAMUWANJA DEYENI-A NGƏRI NGANJINNA-A RO CASADIN DU ?

- da, anta, buni sənana, jogale, nguwal, cam, cuku, kafi, tada kəskaye-a awo cin karungun-a .

3. AYI CAKU KONGUWA, KAMUWA RO BANAYAYIN NA KUMBU JIRI-JIRI FAYIDATUYEN SA SANDI DEYENI KO NGƏRI NGANJINNAN ?

- Kumbuwa adu kumbu du jawuro kamuwa deyesi-a ngəri nganjinna-a ro fayida kuru bu gana kəriwuyin

- Fadon nabtu ndilewa cakin

- Awo'a ndilewa simme cakin coro kumbuwa adun da'anadu kamuwa ro duno tiyi ye cin kuru tram-tram simme ro dabcin

4. UNDU AWO ADU CIDIN ?

5. UNDU SO KASAKCA HAL ADU CAKI AM YERO DASA'NADU BADIJAYIN?

- Jande.....

MAHIM KATUNO YE

konguwa! Ndilewa kamuwa deyesi-a ngəri nganjinne-a ro ngawo masana yen kumbu gade sandiro kudowo kaman da so, anta so, tada kəskaye so, tada keska kərum so kuru la'nja-a



Njime kɛla kumbu fadoyen

Jande am fodoye ya kɛla kumbu tiyiro kuluwu cirayin kamuwa deyeɗi-a ngɛri nganjinna-a kuru cistuwunjuwa !

1. AYI KƏRI FOTO ADU YEN RUWON ?

- Fadoma la'a tiya am fanju ye-a jandeyayin kɛla fayida kumbu njiwo ngɛla kamuwa deyeɗi-a ngɛri nganjinne-a

2. KURUNDON, AYI FAYIDA CISTUWU KUMBU KAMU DEYENIYE RO?

- Ndilewa kamuye tabattuwa

- Fado fantayin fando ro

- Yalla ndilewan tasambu

- Muradu kumbu kumbu kamuye tɛrayin sa sandi deyeɗi dun ko ngɛri nganjinnan

3. KURUNDON, JILEYIN MURADUNJA KUMBUYE RO CISTIYIN?

- Tabattuwa sa samman kamu kumbunjuro ngɛlama cuwandu

- Kumbu yirawo sa-sannen ngawo masana yen juwal kumbu cin karungunne-a kumbu kuluwu-a ndilewa simme-a cirayinne

- Woktu kumbuye kamuro ye juwal cida'ala fadoyen kɛndan

4. NANDI KUWA KURU AWA, AWO ADU DUWO WA AYI FANUWON ?

- Kla habtu

- Cida fadoma ro wajibcina yimburu

- Undu awo adu cidin ?

5. UNDU KASAKCU CAKU HAL ADU AM YERO DASANADU BADIJAYIN ?

- Jande kufu ye ...

MAHIM KATUNO YE

Fuwuma fadoye! Kɛji fanta am fadoye nangaro tabakku no kumbu fodoye sammi kal-kallo yakcana. Kumbu kuluwu cikin ferowa awalakkadaye-a kamuwa deyeɗi-a ngɛri nganjinna-a yero njiskunowo.



KUMBU YALLA SƏNANA KƏNDAWU 6-24 YADE YE

Njistuwu musamman kumbu yalla sənana ye kəndawu 6 ngone 24 yade ye !

1. AYI KƏRI FOTO ADU YEN RUWON ?

- Kamu la'a nabkada bodowo ngə inju kumbu jiri-jiri juwinnen
- Kumbu jiri-jiri
- Wuradu ngəri ye, tambonjun ngone hawul kumbu buye har sa'a 2 yade ye

2. AYI RO FAYIDA KUMBU KƏNJO NGƏRIYE SA KƏNDAWU 6 CIDANAN HAR KƏNDAWU 24 YADE ?

- Kərənju furumtin
- Ndilewa yalle nangaro
- Nan Kəji fanta nangaro
- Wuri gənadu yalla nangaro

3. NANDI KUWA KURU AWA, AWO ADU DUWO WA AYI FANUWON ?

- jande ...

4. JILEYIN YALLA KƏNDAWU 6 NGONE 24 YADE YA NGƏLA RO YIRGALLIYIN ?

- *Jiri nado arumme ye, wuradunju nangaro ngeri jawuro njistuwu-a kumbu kuluwu cirayinna-a muraduyi na : wokuwo so cidanju musamman muraduyi na mbeyi*
 - Yambon ngone kəndawu 6 yade : cam yaye kenjo jalla na adu arum ridan camunju na
 - Kəndawu 6 ngone 12 yade : sa adu kəla tuluwo arumme yeyi, cam kenjo musamman + kumbu kuluwu-a ndilewa simme cirayin na feleda, kumbu cin karungu yirawo tasa ngeriye ro
 - Kəndawu 12 ngone 24 yade: bina ngoda arumme yeyin sa adun cam yaye + kumbu kuluwu-a simmo ndilewa cirayinna kənjo, awo cin karungun kənjo ko yirawo coro tasa ngəri ye ro
 - kəndawu 24 ngone sa'a 5 yade : arum yeyi sa adun ngeri bafu na kumbu kuluwu-a ndilewa simme cirayinna yiye

5. UNDU SO KASAKCA HAL ADU CAKI AM YERO DASA'NADU BADIJAYIN? AYI KELE KUMA DUWON ?

JILEYIN MURADU ADU ASƏLANUWON KURU KAJIYI CORONJUYE RO KANUWON ?

- jande ...

MAHIM KATUNO YE

Fadoma so!kamuwa ngəriya ro cistuwu ma jandenowo kəla kumbu yalla sənana yen yiwo ko manowo sa kumbu fadoye kudon.



KUMBU NGƏRI GANA KƏNDAWU 6 NGNE 24 YADE YE

*Yalla ro kumbu kuluwu cirayinna kare ya bula yen cidadu na coron
awo'a tram-tram simme dabcinna yiwo*

1. AYI KƏRI FOTO ADU YEN RUWON ?

- Awa tadanju ro ngulwul cin (kumbu cin karungun nangaro) sa ya buri dejin du

2. AYI NANGARO AWA SO KUMBU CIN KARUNGUN LARDU YE YALLANJA RO CAWUDIN ?

*- Awo cin karungu kumbu yalle cirayin kuru coron awo kuluwu –a tram-tram simme dabcinna cawandin
- Ngəri kumbu kuluwu cirayinna tiyin bawo ro kayin kuru kasuwa'a kumbu fayida tiyin bawo ye ro dabcin
- Nan tambo dunayin kətte tada-a awa-a
- Kurawu fado ye sayo*

3. RUWONDON AYI SO KUMBU JURUWU YE YALLANDE RO YIYEN DU?

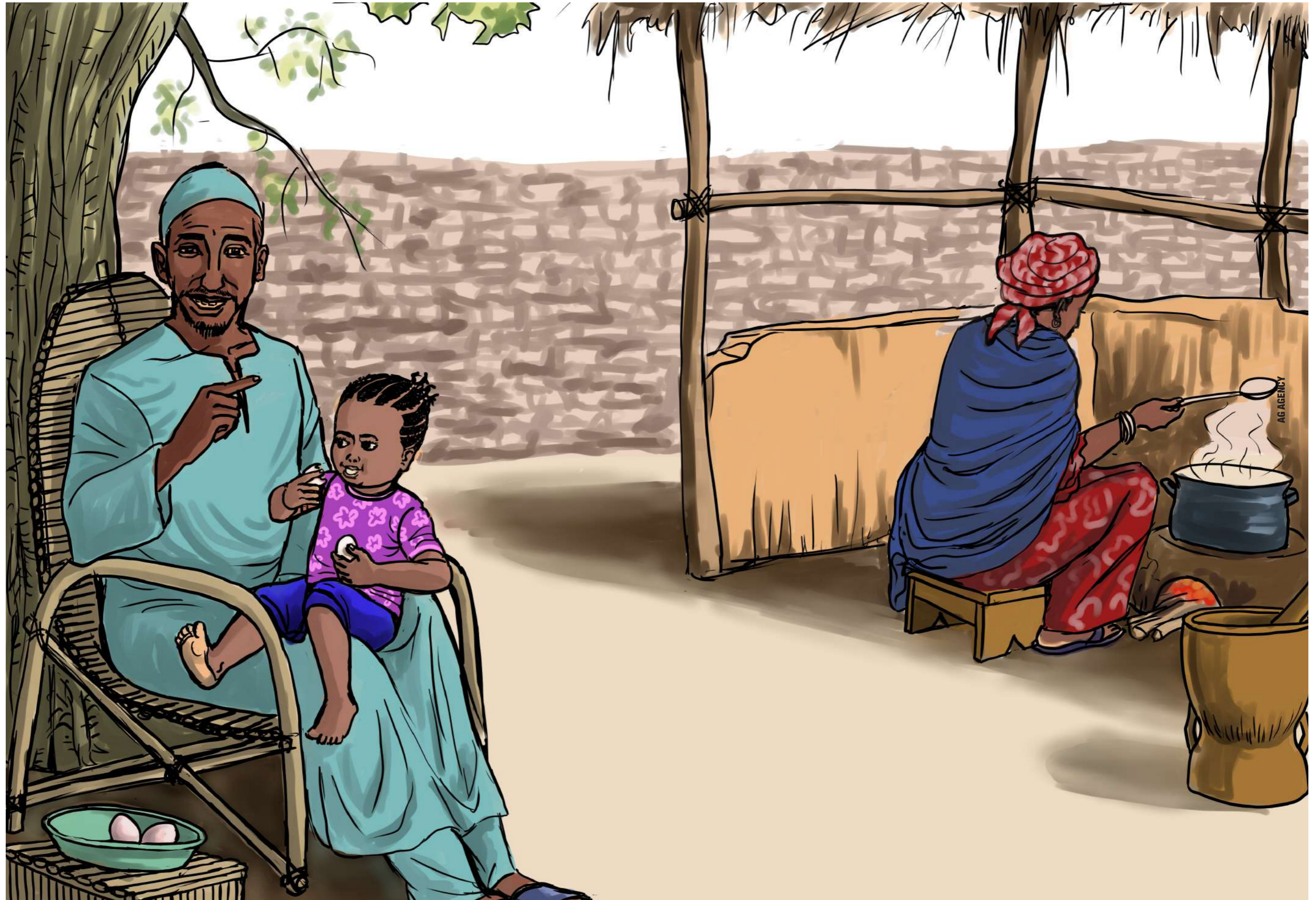
- Nguwul , monguro, anta, cam, cuku, awo cin karungu (karas, burodi ...), jogale, tada keskaye,...

4. UNDU SO KASAKCA HAL ADU CAKI AM YERO DASA'NADU BADIJAYIN? AYI KELE KUMA DUWON ? JILEYIN MURADU ADU ASƏLANUWON KURU KAJIYI CORONJUYE RO KANUWON ?

- jande....

MAHIM KATUNO YE

Awa'a!yallandon ngəla ro wuraya nangaro, kumbu cin karungu kuluwu-a ndilewa
simme-a cirayin kudowo indikite masana yen



KUMBU NGƏRI GANA KƏNDAWU 6 NGONE 24 RO YADE YE

Wolluwo ngəla ro ngawo cida fadoye kullumme tayyo !

1. AYI KƏRI FOTO ADU YEN RUWON ?

- Awa ngərinju gana ro kumbu cin don dama kamunju ro kəlanji-a kumbu duriya kura-kura yero njistuwu ro
- Ka'a tiya diwujuwa masana cadin dan ngəla ro ti ro cistuwu ro

2. KURONDON, AYI NANGARO AWA'A CIDA FADO YE CADA YIN ?

- Cida kamuye fuluyin
- Kamu ro waktu kumbunju-a kumbu tadanju-a njista ye cin
- Nan fantu coro fado yen
- Awo misalle yallanju-a am gade-a ro
- Nan kuranju kuru na yallanjiyenna na am gadeyenna

3. KURONDON, AYI SO CIDA'A FADO YE KUWA RAKCU CIDIN DU KO KAM LA'A WAKILJIN?

- Nji ngoda
- Kəska kudo
- Ngəri roda

4. UNDU SO KASAKCA HAL ADU CAKI AM YERO DASA'NADU BADIJAYIN? AYI KƏLE KUMA DUWON? JILEYIN MURADU ADU ASƏLANUWON KURU KAJIYI CORONJUYE RO KANUWON ?

MAHIM KATUNO YE

konguwa ! Kamuwando waktu muradu ya na kəlanja ngəla ro yirgaltu nangaro, kuru cida fadoye sandiro tayiyo don kəlanja ro ngəla ro njistuwu ro



AG AGENCY

WAKIL FALTU YALLAYE- A JAMA YE-A RO WALDA

Na kumbu kuluwu cirayinna awo misalle ro wollowo kuru illumdo tarku no am gade ro !

1. AYI KƏRI FOTO ADU YEN RUWON ?

- Fadoma ilmunju jama ro tarjiyin

2. KURU NIMIN AYI NANGARO AWA'A HAL NJA NGƏLA DU AWA'A LA 'A RO TARJAYIN ?

- Don hal ngəla du ngoja ro*
- Ndilewa ya-a tada-a kuru am sammi yi ciki*
- Ndilewa yalla ye ida fuwu yiyin*
- Awa yallaye daraja cuwandin na jama yen*

**3. TO DOWARTUMMA WA WAKIL JAMA YE NA HAL FALDUYEN KURU KASANNUM HAL NGƏLA BODOWO NIMIN TARNIMIN ?
KUMA AYI KƏLE DIMIN ?**

- Jande....

MAHIM KATUNO YE

Awa'a !

Ndilewa kamuwando-a yallando-a nangaro hal ngela tarnuwu wo.



AG AGENCY

*Wannan littahin, ya yiyu ne ta hanyar goyon bayan jama'ar Amurka ta Hukumar Raya
Kasa da Kasa ta Amurka.*

*An shirya shi karkashin sharuɗɗan kwangilar 7200AA18C00070 da aka ba JSI Research
& Training Institute, Inc. (JSI).*

*Abubuwan da ke ciki alhakin JSI ne kuma ba lallai ba ne su yi daidai da ra'ayoyin
Gwamnatin Amurka...*