



CU KITAWU YE

**Jileyin yandi ayya'a kumbu tiyiro kuluwu
cirayin ka'ande-a yallade-a ro tun gananja
njiskaniyen ?**

JUWALLA YALLANDORO

Juwalla furumowo fayida fadomandoye-a ngəriyandoye ro

1. AYI KƏLA FOTO ADUYEN RUWON ?

- *Ayya la'a tiya sawa'anjuwa namjana jandeyayin, ilmunju kəla fado fantayin nen tarjiyin.*

2. Ayi fado fantayin du??

- *fado doni cida kamuwa fuluduna*

- *Fado doni kamu-a ngəriyanja-a coro kəji fantayen kasaru*

3. Ya jileyi ro wallimiya ra'am?

- *jande.....*

4. Jileyin kumbu ngələma niya bananjuwu muradu adu asəlanimin?

- *Ngəri kullum coro ndilewayen kara kuru ngəla ro wurajin*

- *Ya ye duno cuwandin na ngəri-a fado-a njistuwuyen*

5. Jileyin nandi ya kuru kamu deyen kamando bana nuwone na kumbu ngəla yallen kaldən ?

MAHIM KATUNO YE

Kumbu ngələma rakcu nandiro banayin na muradundo-a muradu kəngendoye-a ngəriyandoye-a asəlatuyen.

Kəji fanta yallandoye ro nangaro kamuwando wa na cida fadoyen bana no.



ABINCI NAGARTACCE

Abincinku yana da mahimmanci a matsayin mata masu ciki ko masu shayarwa

1. AYI KƏLA FOTO ADUYEN RUWON ?

- Kamu tiya tadanjuwa coro kəji fantayen

2. Jileyin kəji fanta adu fandiye ?

- Kumbu kəriyee tiyiro kuluwu-a ndilewa simme-a cirayinna buwo*
- Kurun kamu corowa ro litarin cadin dun fayidatu no sa nandi deyenin kuru 90 ngawo yambonayen dan bu tiyi ye fando nangaro*
- Kam la'a fantuwonna mane niro kurun litarin cadin adu wa manjuwu kuru ware njassimi kullummo yayi.*
- Bana kwanumme mane coro cida'ala fadoyen*

3. TO CORO HAL KAMU ADU DAGANA DUN NGAMIYA RA'MA WA?AYI RO?

- Jande....

4. TO UNDU MANGƏRCU HAL ADU CAKU AM DONI YERO DASANADU BADIJAYIN? TO AYI KƏLE DUWON? TO JILEYIN MURADU ADU ASƏLANUWON KURU KAJIYI CORONJUYE RO KANUWON ?

- Jande.....

MAHIM KATUNO YE

Kumbu ngəla-ngəla kamu corowaye-a ngəri nganjinne-a jawuro kənda'a fadoyero fayida.

Ngəla ro njiskəniye ya, undu so ro njiskəyin.



KAMUWA COROWA-A NGƏRI NGANJINNA-A KURUN TIYIRO BU CIRAYIN FAF NJANIDU KLA-KLAN CASA, SA SANDI DEYENI DUN KURU 90 NGAWO CASAMBUNAYEN.

Coro fadoyen kam la'a mane niro bananjuwu na kənja kurun tiyiro bu yirawoye FAF sayi so.

1. AYI KƏLA FOTO ADUYEN RUWON ?

- Kamu la'a corowa, kəsayinju tiro banayin na kurun Kənja kullummen.

2. AYI NANGARO KAMU COROWA KAM LA'A TIRO NA KURUN KƏNJA KULLUM BANAYIN MAJIN ?

*- KURUN KƏNJADUWA KANBAYIN
- Kərawo am fado ye coro du ro felejayinduwa turin
- Kamu duwa caku duno kurun maduye-a kənjaye-a cuwandi*

3. UNDU MANGƏRNUM NIRO KULLUM BANANJIYIN NA KƏNJA KURUN TIYIRO BU CIRAYIN FAF CANI DUN ? AYI NANAGARO?

*- Kwani
- kəsayini
- Kinge kwaye
- kəmaskini*

4. TO UNDU MANGƏRCU HAL ADU CAKU AM DONI YERO DASANADU BADIJAYIN? TO AYI KƏLE DUWON? TO JILEYIN MURADU ADU ASƏLANUWON KURU KAJIYI CORONJUYE RO KANUWON ?

- Jande.....

MAHIM KATUNO YE

Kam fantuwundu rakcu niro kurun FAF manjiyin kuru niro kənanju kullum tanjiyin.

Njistuwu adu nandiro cando.



WOKTU KALKAL KURUN BU YIRAWOYE KƏNJAYE DON ILLANJU FULUDU NANGARO

*Jande kufu kamu la'a yenna kəla waktu kurun bu yirawoye Kenjaye
don illanju fuludu nangaro*

1. AYI KƏLA FOTO ADUYEN RUWON ?

- Kufu kamuwa deye ni ye jandeyayin kəla sa Kenja kurun bu yirawoyen njan .

2. AYI NANGARO KAMUWA DEYENI KULLUM KURUN BU YIRAWO CASAYIN ?

*- Tiya ya bu gana ro dabtu nangaro
- Nan ndilewa tiya yero nangaro
- Ngəri jawuro kambayi yamboro dabci*

3. SAWARI JILEYIN KAMUWA LA'A RO YIWON KƏLA ILLA DONI CORO KURUN BU YIRAWOYEN KARANA DU ?

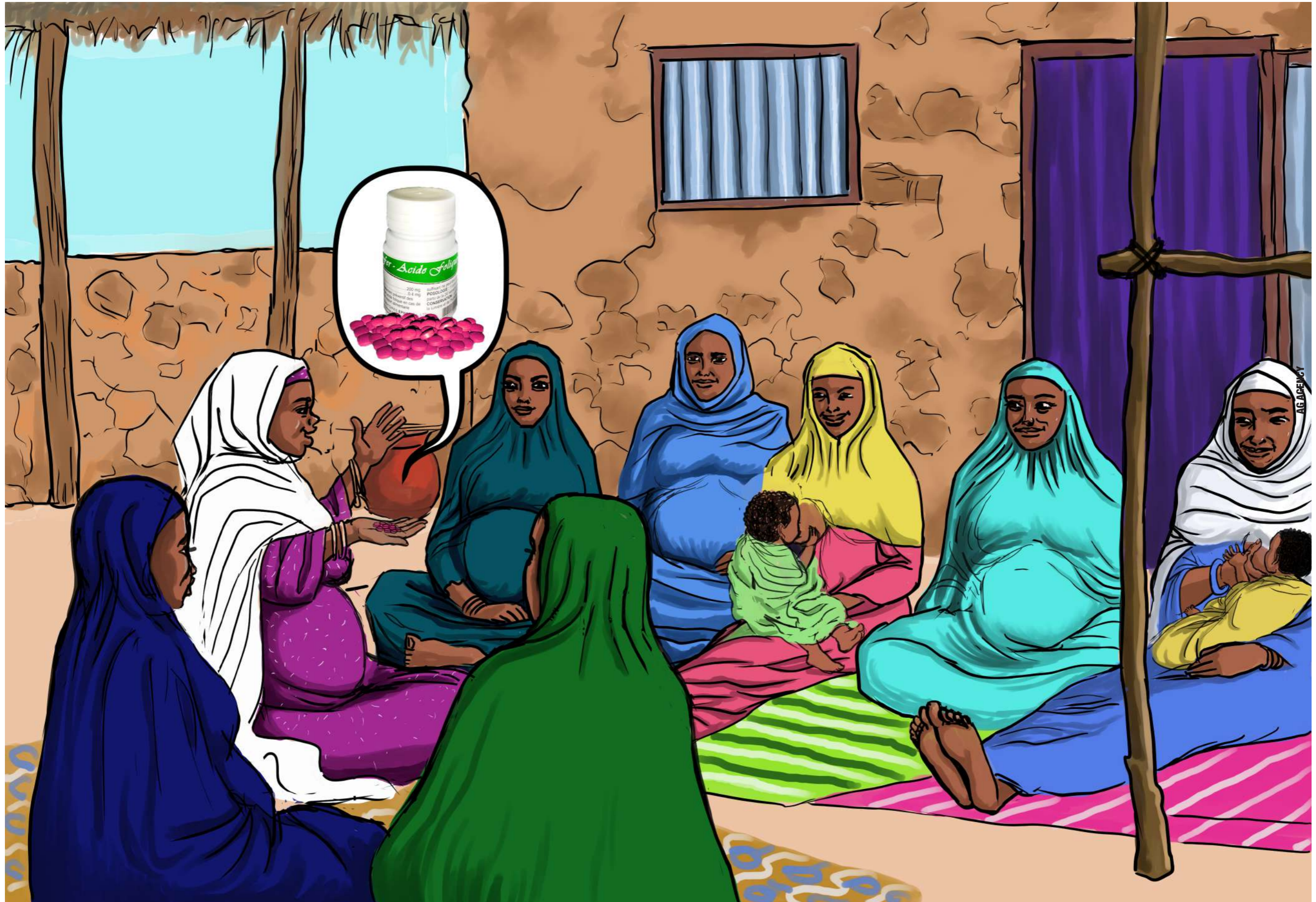
*- NGAWO KUMBU DUWUNAYEN CASA
- KAYIRI KURUN DUWA CASA*

4. TO UNDU MANGƏRCU HAL ADU CAKU AM DONI YERO DASANADU BADIYAYIN ?

- Jande....

MAHIM KATUNO YE

Ndilewa kamuye-a tiwol coroye nangaro kurun doni bu cirayin FAF adu manowo faidatunowo kullummo jiri kal-kal gulnjana duro.



KUMBU KULLUMME JIRI-JIRI KAMUWA NGƏRI NGANJINNA-A DEYAYENI-A YE JUWAL KUMBU CIN KARUNGUYENNA KURU KUMBU TRAM-TRAM SIMME DABCINNE-A

Ndilewando nangaro ~ umbu tiyiro kuluwu cirayinnan fayidatu no ko kumbu tram-tram simme dabcinna coro kumbundo kullummero yirawo

1. AYI KƏLA FOTO ADUYEN RUWON ?

- Kamu la'a deyeeni-a ngəri nganjinna-a tərä rungo kukayen casargana casayin.

2. AYI NANGARO KAMU COROWA-A NGƏRI NGANJINNA-A RUNGO KUKAYE CASA YIN KO KUMBU TIYIRO KULUWU CIRAYINNAN FAYIDATAYIN ?

- Kuluwu tiyi ye yirawo nangaro*
- Kasuwa bu ganaye-a kasuwa tram-tram simme-a kəriodu ro*
- Nan ndilewa nangaro*
- Nan kəji tiyi ye fanta ro*

3. KUMBU JILEYI TIYIRO BU CIRAYIN KO CORON AWO'A TRAM-TRAM SIMME DABCIN KAMUWA CORO-A NGƏRI NGANJINNA-A RAKCA MASANANJA RO KƏLKIYAYIN ?

- Rungo kuka ye*
- Kəndawu fee*
- Jogole ngamdu*
- cam*

4. TO UNDU MANGƏRCU HAL ADU CAKU AM DONI YERO DASANADU BADIJAYIN ? TO AYI KƏLE DUWON ? TO JILEYIN MURADU ADU ASƏLANUWON KURU KAJIYI CORONJUYE RO KANUWON ?

MAHIM KATUNO YE

Kamuwa ngəri nganjinna-a kamuwa corowa-a, kəji fantando nangaro kumbu simmo ndilewa cirayinna-a kumbu tiyiro bu cirayinna juruwundon tuwandin buwo ko juwal masana ro yirawoyen fayidatuno



KUMBU JIRI-JIRI KULLUMME KAMUWA NGƏRI NGANJINNA-A DEYENI-A CORON AWO'A KULUWU TIYIRO CIRAYINNA-A KURU TRAM-TRAM SIMME DABCINNA-A

Jande am fadoye-a kəla fayida kumbu tiyiro kuluwu cirayinne kamuwa deyeeni-a kamuwa ngəri nganjinna-a kuru kumbu kla-klan muradayayin du ndilewanja nangaro

1. AYI KƏLA FOTO ADUYEN RUWON ?

- Kumurso la am fanju ye ro kumbu jiri-jiri kamuwa deyeeni-a kamuwa ngəri nganjinna-a muradayayin du guljiyin.

2. KURUNDON, AYI NANGARO AM FADOYE JANDE MUSAMMAN KƏLA KUMBU TIYIRO KULUWU CIRAYIN KAMU DEYENI YA KAMU NGƏRI NGANJINNE YA CADIN ?

*- Njistuwu kumbu tiyiro kuluwu cirayin kamuwa deyeeni-a kamuwa ngəri nganjinne-a kambayin
- Caku kamu deyeeni dama kumbu tiyiro kuluwu cirayinna kumbu tram-tram simme dabcinna ngəla ro cuwandi*

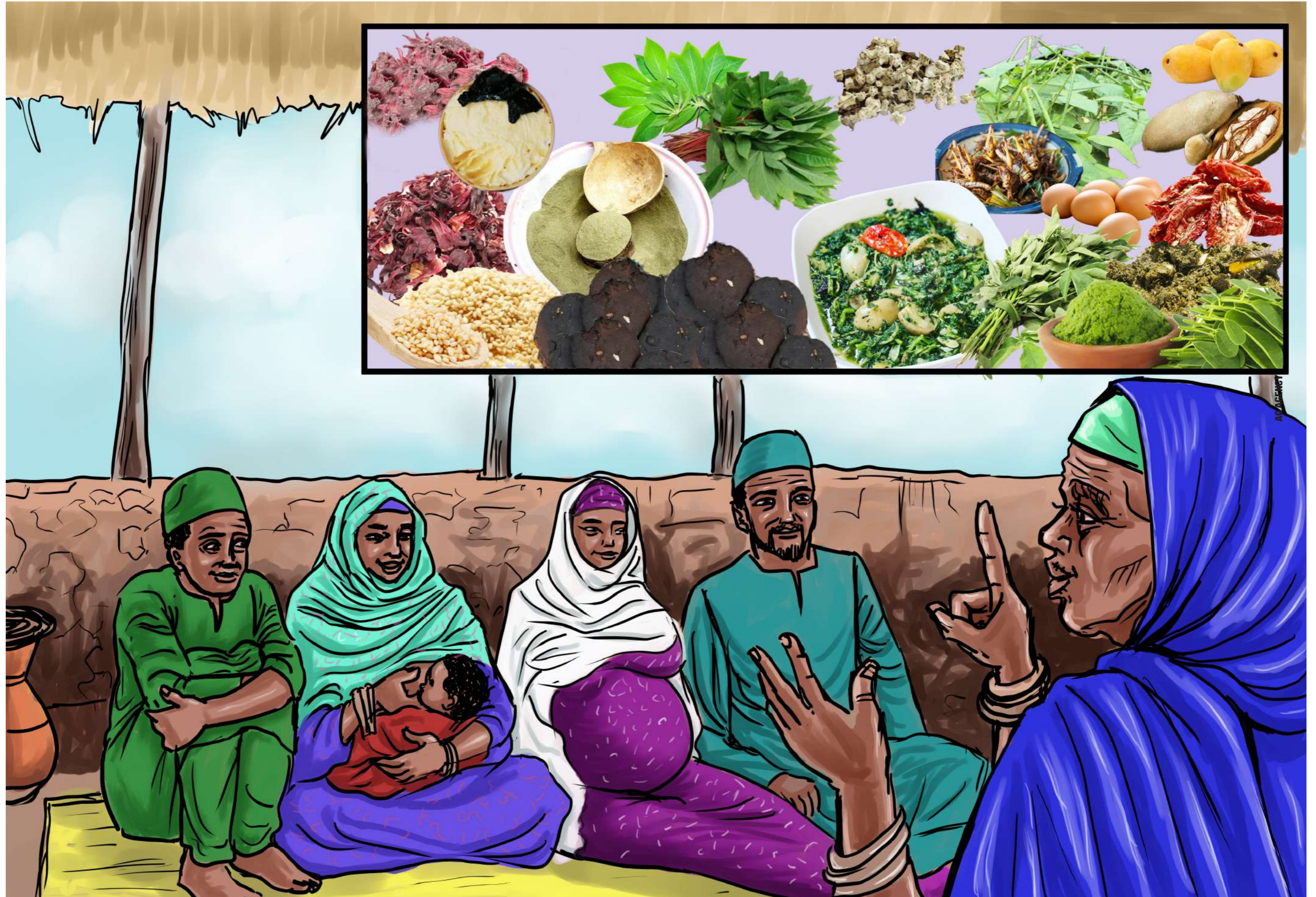
3. JILEYI FANUWON SA YALLANDO JANDE KƏLA MURADU KUMBU KAMU DEYENI-A KAMU NGƏRI NGANJINNA YEN CADIYA ?

*- Ngawonju cadana!
- Duno cadəna!
- kayana !*

4. AYI KAMUWA CADIN KƏLA JANDE ADU RO DUNO KƏNJO NANGARO ? FADON JUWAL NGƏLA MBEYI WA AWO ADU TARTUWU RO ?

MAHIM KATUNO YE

Kamuwa deyeeni-a kamuwa ngəri nganjinna nandiya am fadoye ya nammo jande no kəla muradun do na kumbu tiyiro bu cirayinna-a kumbu ndilewa simmo cirayinna-a kuru kurun bu tiyiro cirayinna. Aduma caki kumbundo wa kayayin



KUMBU JIRI-JIRI YALLAYE SIMMO NDILEWA CIRAYINNA-A TIYIRO BU CIRAYINNA KURU KUMBU CIN KARUNGU KALKAL WURADUNJAYE

*Kullum masana ngəriyando ye ro kumbu tiyiro kuluwu cirayinna-a kumbu ndilewa
simme cirayinna-a kuru kurun bu cirayinna kəlluwu no*

1. AYI KƏLA FOTO ADUYEN RUWON ?

- Kamu la'a tadanju kəndawu 6-12 naro bulum coron rungo jogoleye carana cin
- Tada kəndawunju 12-24 yade reda nguwulle juwin

2. AYI RO FAYIDA RUNGO JOGOLEYE YIRAWO DU CORO KUMBU NGƏRI KƏNDAWU 6-12 DU?

- bulummo awo'a bu cirayinna-a kuru awo'a simmo tram-tram dabcinna cirayin
- Nandiro dama tada kənaba-a ndilewa-a kuru ngla ro wurayinna njadin

3. NABTUNDO YA YEN, AWO ADU DUWOWA AYI FANUWON?

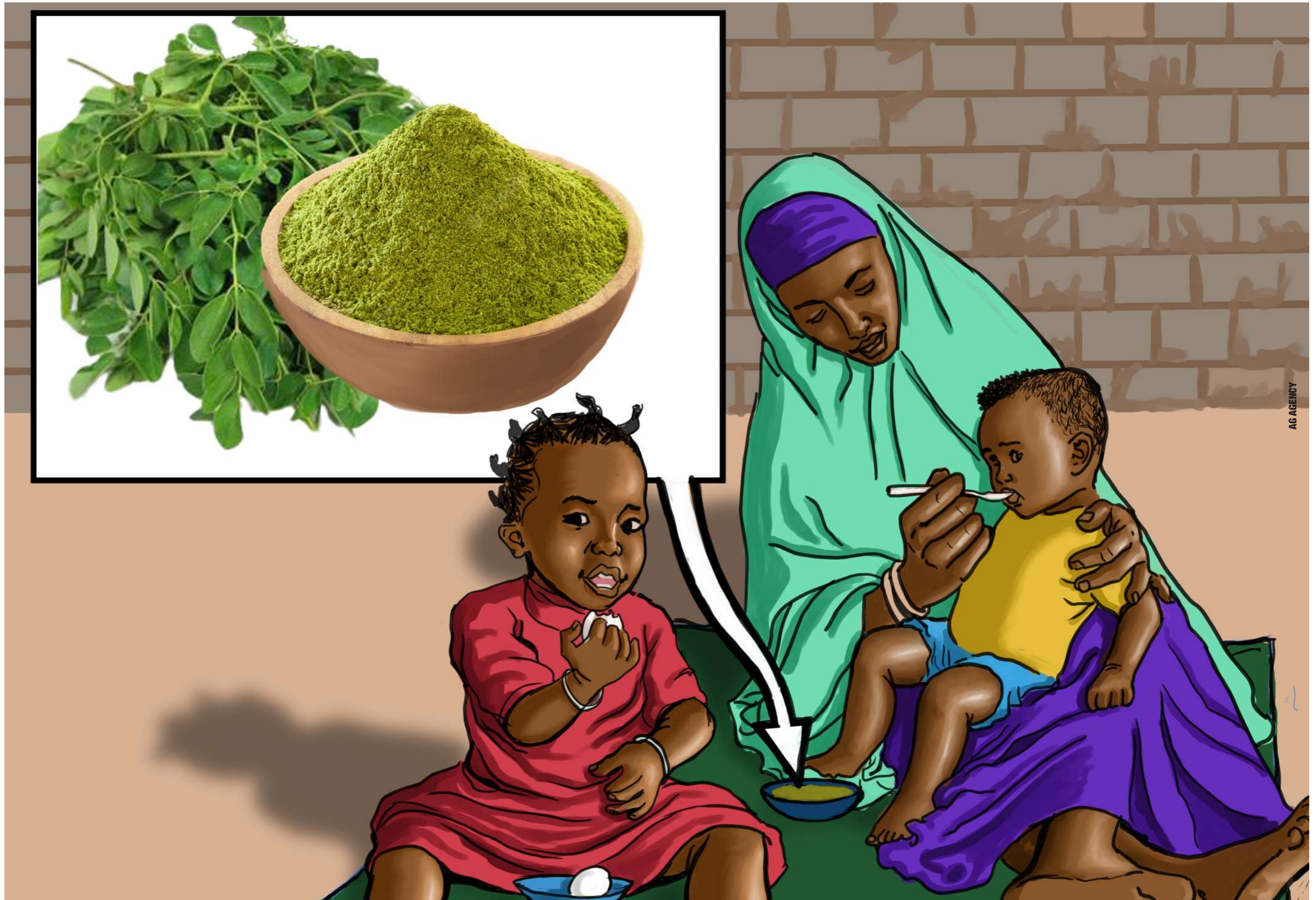
4. ILEYIN YALLANDE KƏNDAWU ARAKUN (6) TAYI KENDAWU 24 YADE CADANA DU NGƏLA RO YIRGALLIYIN ?

- Juwal yallande ro klan-klan kumbu tiyiro kuluwu cirayinna-a kumbu ndilewa simmo cirayinna kenjon
- Juwal kumbu tiyiro kuluwu-a ndilewa simmo cirayinna yirawoyen coro masananja kullummen ko juwal kumbu cin
- karungun yiwoyen ko tasanjaro yirawoyen .

5. TO UNDU MANGƏRCU HAL ADU CAKU AM DONI YERO DASANADU BADIJAYIN? TO AYI KƏLE DUWON ? TO JILEYIN MURADU ADU ASƏLANUWON KURU KAJIYI CORONJUYE RO KANUWON ?

MAHIM KATUNO YE

Ayya'a, wuradu yallandoye ro nangaro kumbunja sammi yasawo juwal kumbu kuluwu-a bu-a ndilewa simme- a cirayinnen kənjon



AG AGENCY

AYYA'A YALLA RO CISTUWUMA KUMBU JIRI-JIRIN CORON AWO'A NDILEWA SIMMO CIRAYINNEN YALLANJA YIRGALJAYIN

Ndilewa yallandoye nangaro sandiro kumbu tiyiro kuluwu cirayinna kla-klan indikite masanayen yiwo

1. AYI KƏLA FOTO ADUYEN RUWON ?

- Ya la'a nguwal tadanjuru cukuyin kumbu cin karungun nangaro

2. KURUNDO AYI CAKU AYYA'A YALLANJA RO KUMBU KƏRIYE YE TIYIRO KULUWU CIRAYINNA CADIN?

- Kumbu yalle ida kalkaljiyin

- Yalla jawuro awa'a tiyiro kuluwu cirayinna nguwu muradayana ngəla ro wuradunja nangaro. kumbu runju muradunja asəlayin.awo cin karungu jawuro faidayin!

3. KURUNDON AWI SO KUMBU FADOYE KULLUMMO YALLANDE RO YIYEN INDIKITE MASANAYEN ?

- nguwal

- Cuku

- jogale

- Anta-a da-a

- Tada kəskaye

4. UNDU MANGƏRCU HAL ADU CAKU AM YERO DASANADU BADIJAYIN? TO AYI KƏLE DUWON? TO JILEYIN MURADU ADU ASƏLANUWON KURU kajiyi CORONJUYE RO KANUWON ?

MAHIM KATUNO YE

Ayya'a, wuradu yallandoye nangaro kumbu kəriye ye tiyiro kuluwu cirayin na ko kurun tram-tram simme dabcinna yiwo indikite masanayen



MASANA JIRI-JIRI KULLUMME KULUWU TIYI RO CIRAYINNA-A NDILEWA SIMMO CINNA-A KAMUWA-A DEYENIA NGƏRI NGANJINNE-A JUWAL KUMBU CIN KARUNGUNNEN

Jande am fadoye ya kəla cistuwu kumbu tiyiro kuluwu cirayin kamuwa deyesi-a ngəri nganjinne-a kuru kumbu kla-klan la'abcana du don ndilewa tiyinja nangaro

1. AYI KƏLA FOTO ADUYEN RUWON ?

- Kamu rashidu la'a masana tiya kəsayinju deyesi-a cedəna du, tiro sawari kəndawu fee yirawo cin.

2. KURUNDO AYI NANGARO KAMUWA RASHIDUWA KUMBU AWIDAYE RO SIM CAKIN ?

- Kamuwa rashiduwa jawuro awo'a nguwu awida fayidatayinna cadana

- Kamuwa deyesi-a ngəri nganjinna-a tabacciyin

3. KURUNDON AYI NANGARO KAMUWA DEYENI-A NGƏRI NGANJINNA-A AWO'A KULUWU CIRAYINNA MURADUYA YIN ?

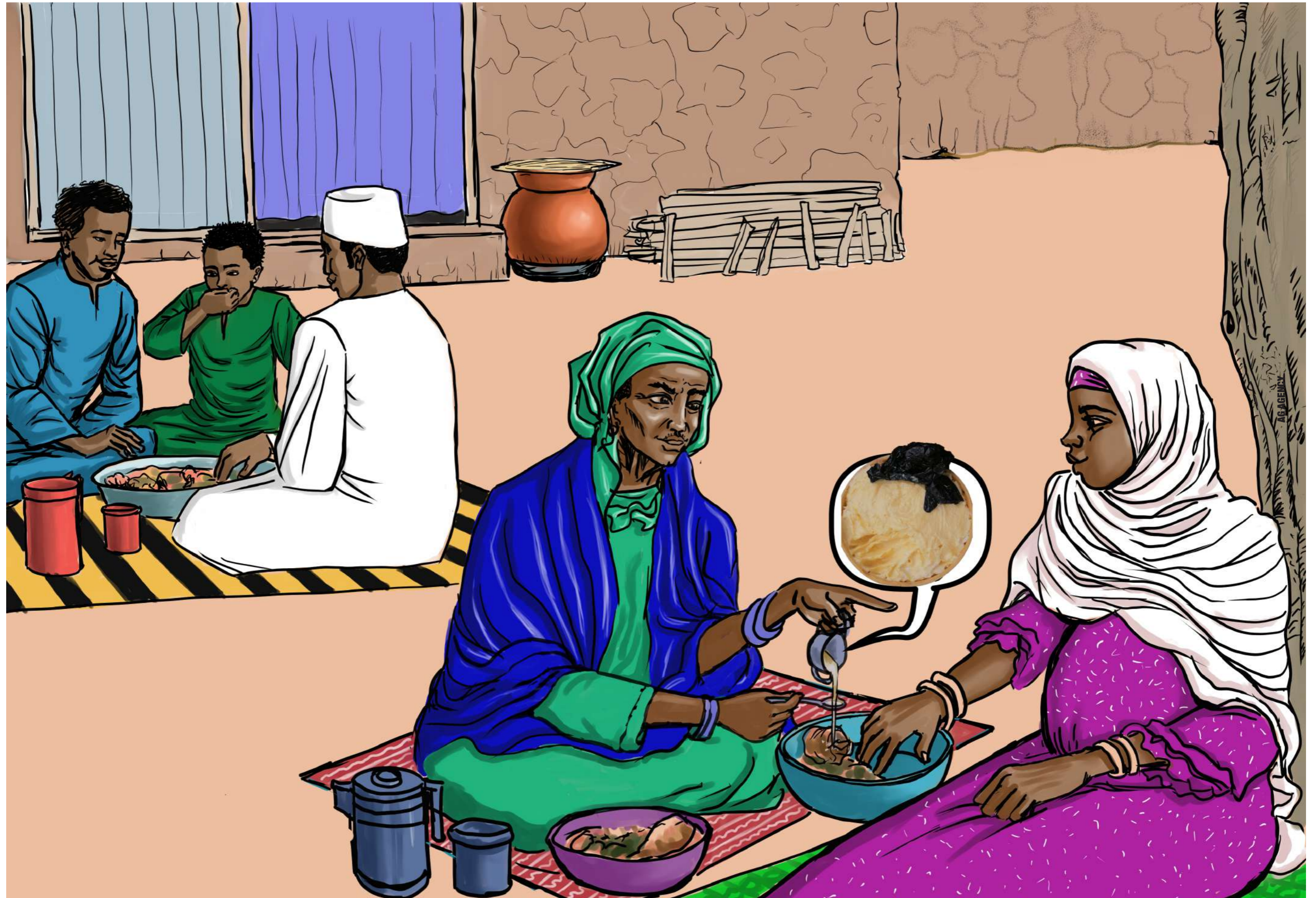
- Ndilewa ka'anja-a tiwol njaye-a nangaro

4. RANNUWO KAMUWA RASHIDUWA WA KORUWON WA? AYI DUWON NGAWA FOTO ADU RUWO NA YEN ?

5. UNDU MANGƏRCU HAL ADU CAKU AM YERO DASANA DU BADIJAYIN ? TO AYI KƏLE DUWON ? TO JILEYIN MURADU ADU ASƏLANUWON KURU KAJIYI CORONJUYE RO KANUWON ?

MAHIM KATUNO YE

Kamuwa deyesi-a ngeri nganjinna-a am fadoye ya ngimenowo kəla muradundu kumbu tiyiro kuluwu cirayinnen na kumbu yaktuyen



KUMBU TIYIRO KULUWU-A NDILEWA SIMMME-A CIRAYINNA KAMUWA DEYENI-A NGƏRI NGANJINNA YE KURU YALLA SA SA'ANJA FAL TAYI UWU RO YADEN JUWAL KUMBU CIN KARUNGUN NEN

Kumbundo wa kumbu yallando ye-a ida dunowo no

1. AYI KƏLA FOTO ADUYEN RUWON ?

- Kamu la'a cam kani ye cayin kuru bulum yallanji yero fijiyin

2. KURUNDON AYI NANGARO KAMUWA-A YALLANJA-A CAM KANI YE CASAYIN?

- Furtu awo simmo ndilewa cirayinna hawulle fadon tuwandin du

3. AYI SO KURU BUWON YALLANDO YE RO YIWON ?

- cam

- anta

- Tada kəskaye

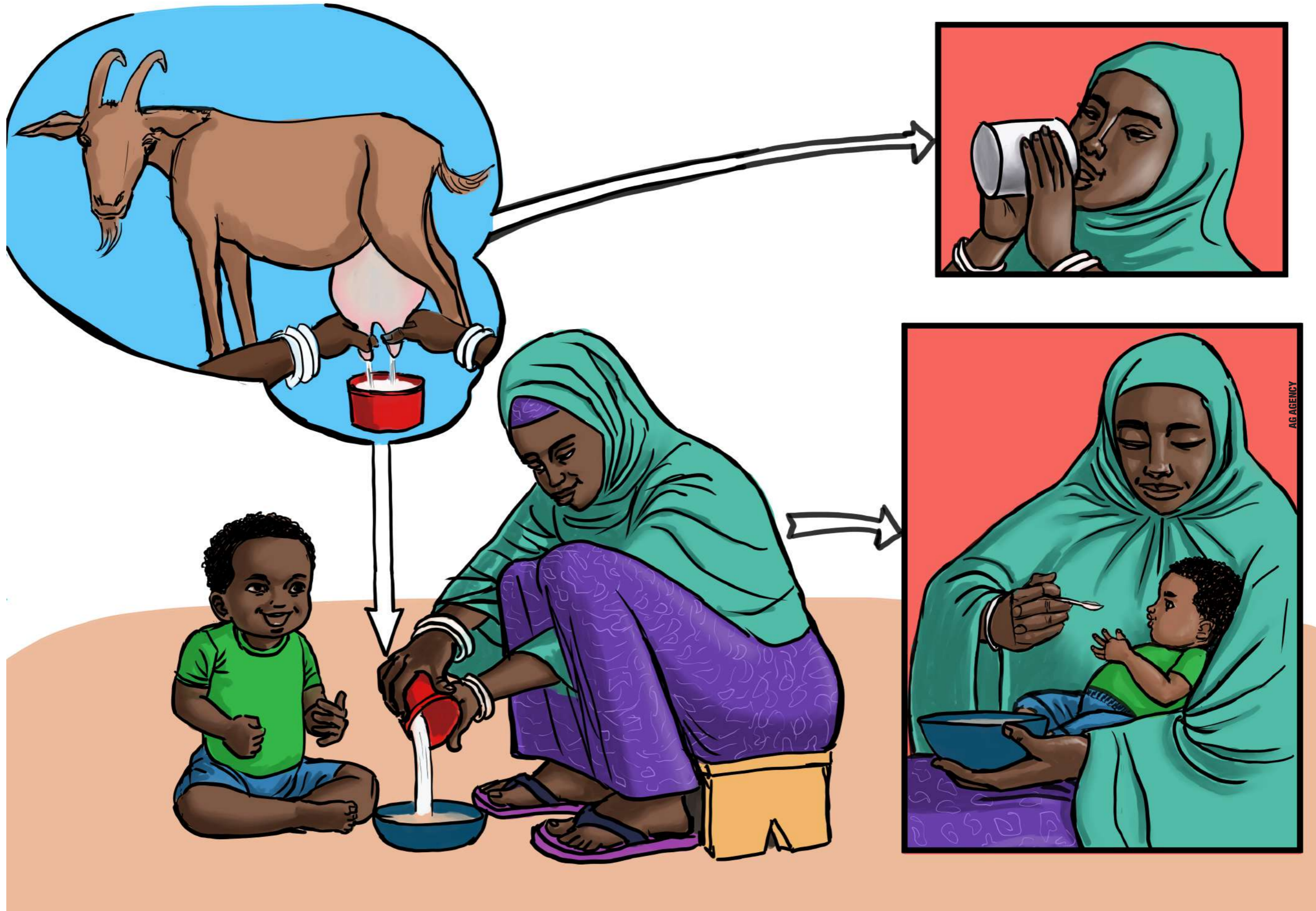
- jogale

- Nguwul

4. UNDU MANGƏRCU HAL ADU CAKU AM YERO DASANA DU BADIJAYIN ? TO AYI KƏLE DUWON ? TO JILEYIN MURADU ADU ASƏLANUWON KURU KAJIYI CORONJUYE RO KANUWON ?

MAHIM KATUNO YE

Kamuwa deyesi-a ngəri nganjinna-a ndilewando nangaro kumbundo ida dunowo no juwal kumbu kuluwu-a ndilewa simme cirayinnen



*Kitawu adu juwal bana am amurukayen furtu cidaram fuwun buyi lardu yen tuwando .
Furtu sharaduwa kongila 7200AA18C00070 JSI Research & Training Institute, Inc. (JSI)
tudo. Awa'a coronjiye du JSI ye, wone ye kuru am amarukaye ya gadegade.*